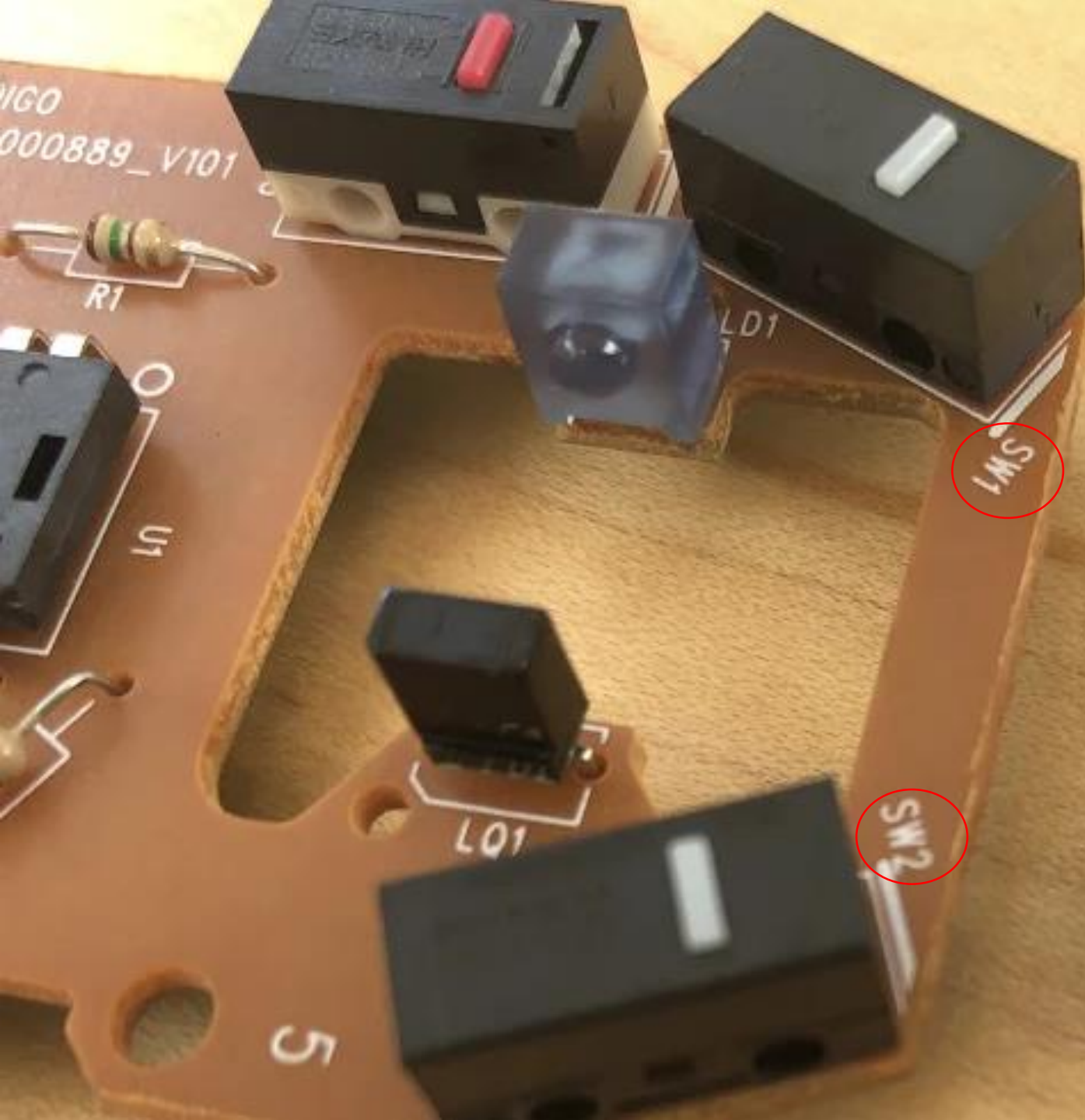


Dell 9RRC7 Optical Computer Mouse Parts List

CSM Talons Robotics



WIGO
000889_V101

R1

U1

LD1

SW1

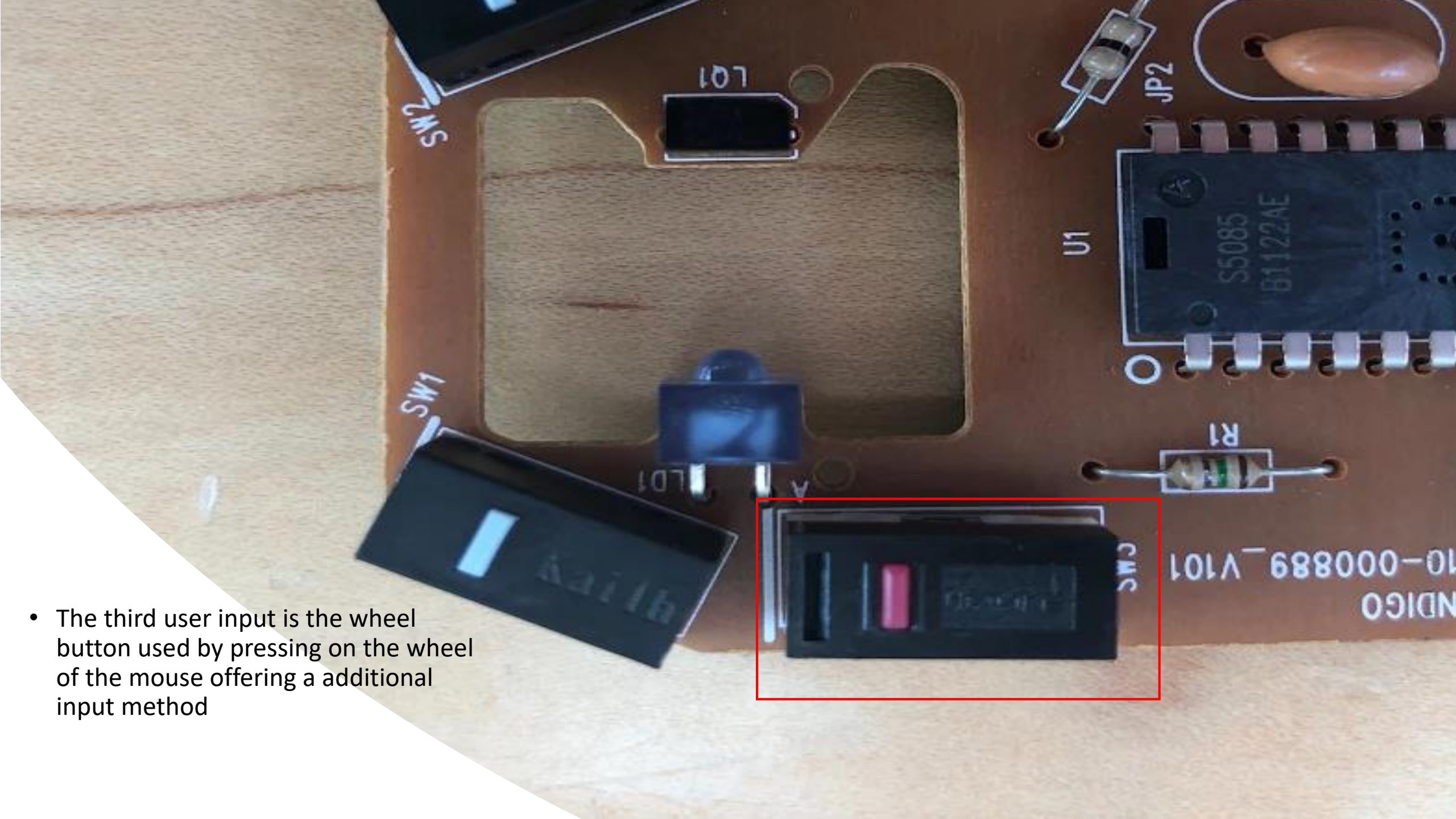
L01

SW2

5

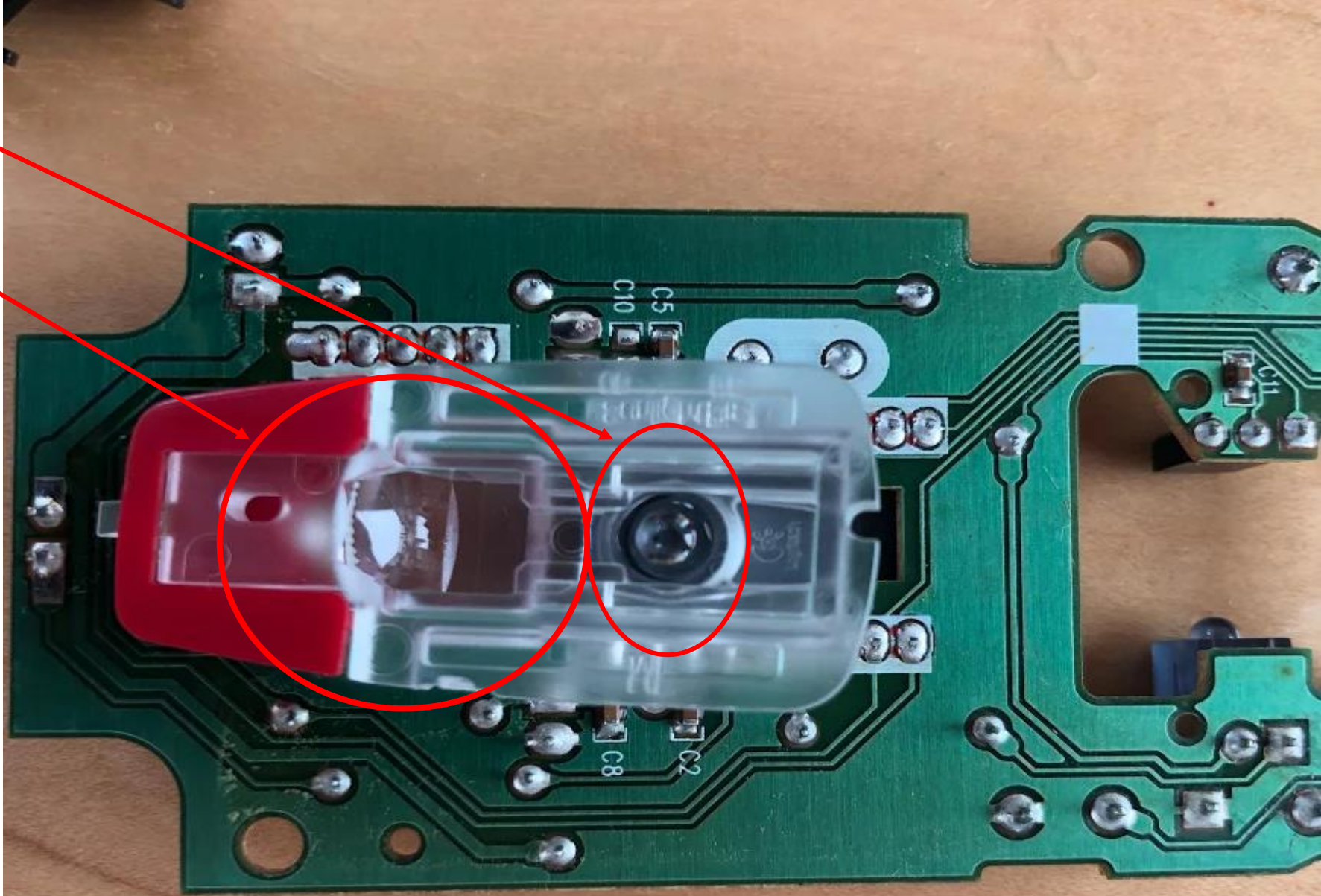
- Buttons for user inputs are in red
- SW1 is the left click mouse button
- SW2 is the right click mouse button

- The third user input is the wheel button used by pressing on the wheel of the mouse offering a additional input method



- The motion of the scroll wheel is sensed by the optical encoding sensor similar to the Vex axle encoder

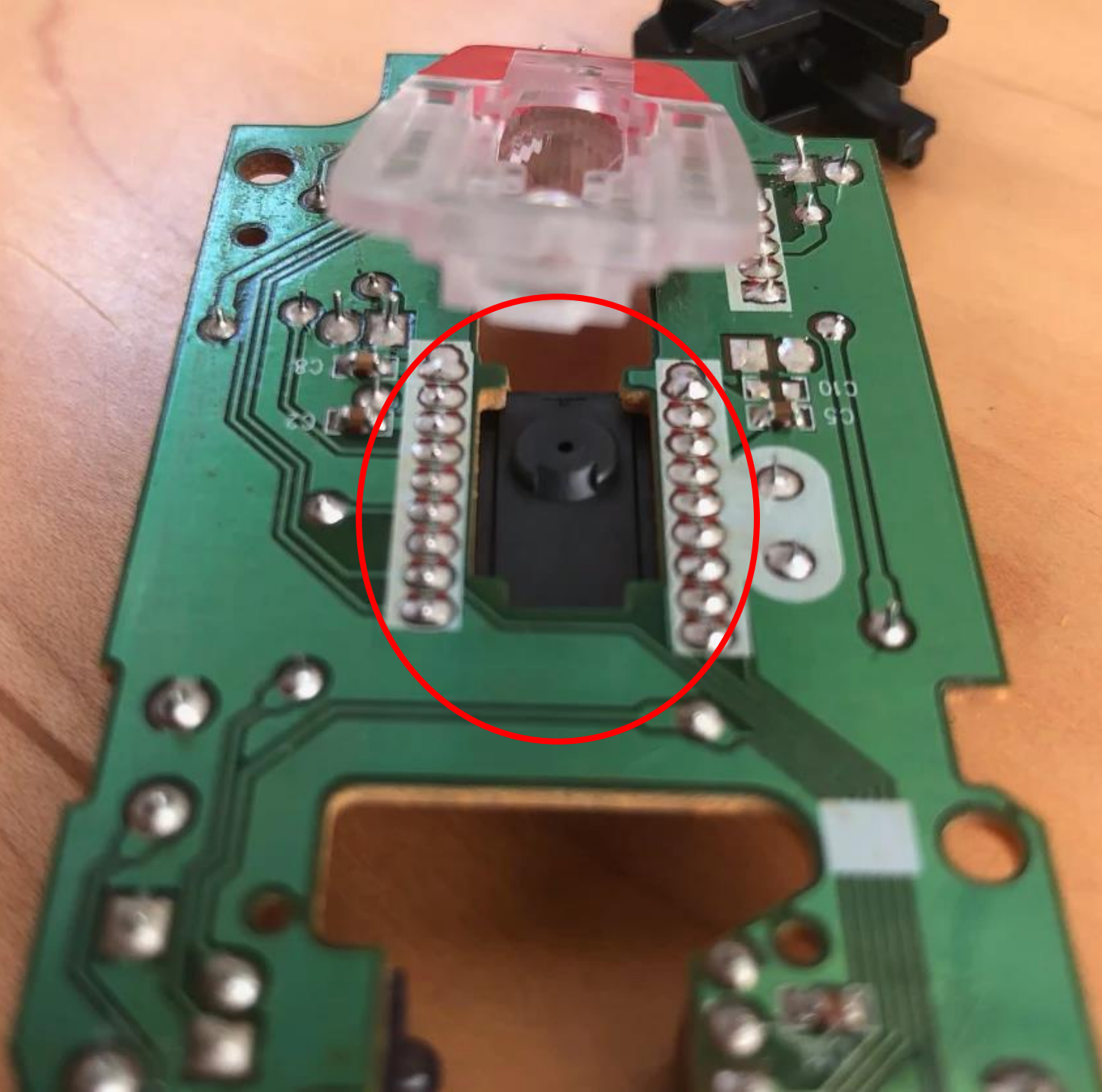




Infrared light sensor

Infrared light magnifier

The infrared light is magnified through the lens and is sensed by the infrared sensor



The infrared sensor interprets the movement of the magnified light on the surface sending the information to the computer.

Integrated Circuit (IC) Chip

This IC chip manages the inputs from the optical sensor and sends them out to the computer in the form of a signal that the computer can recognize.

