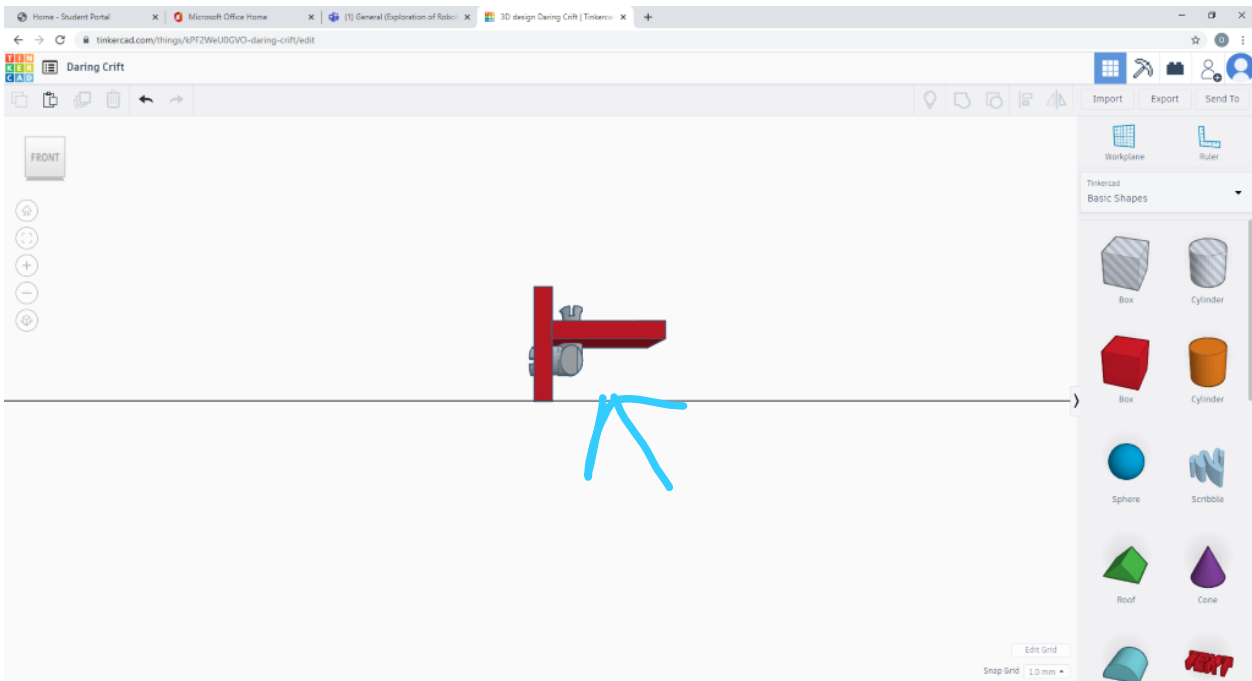
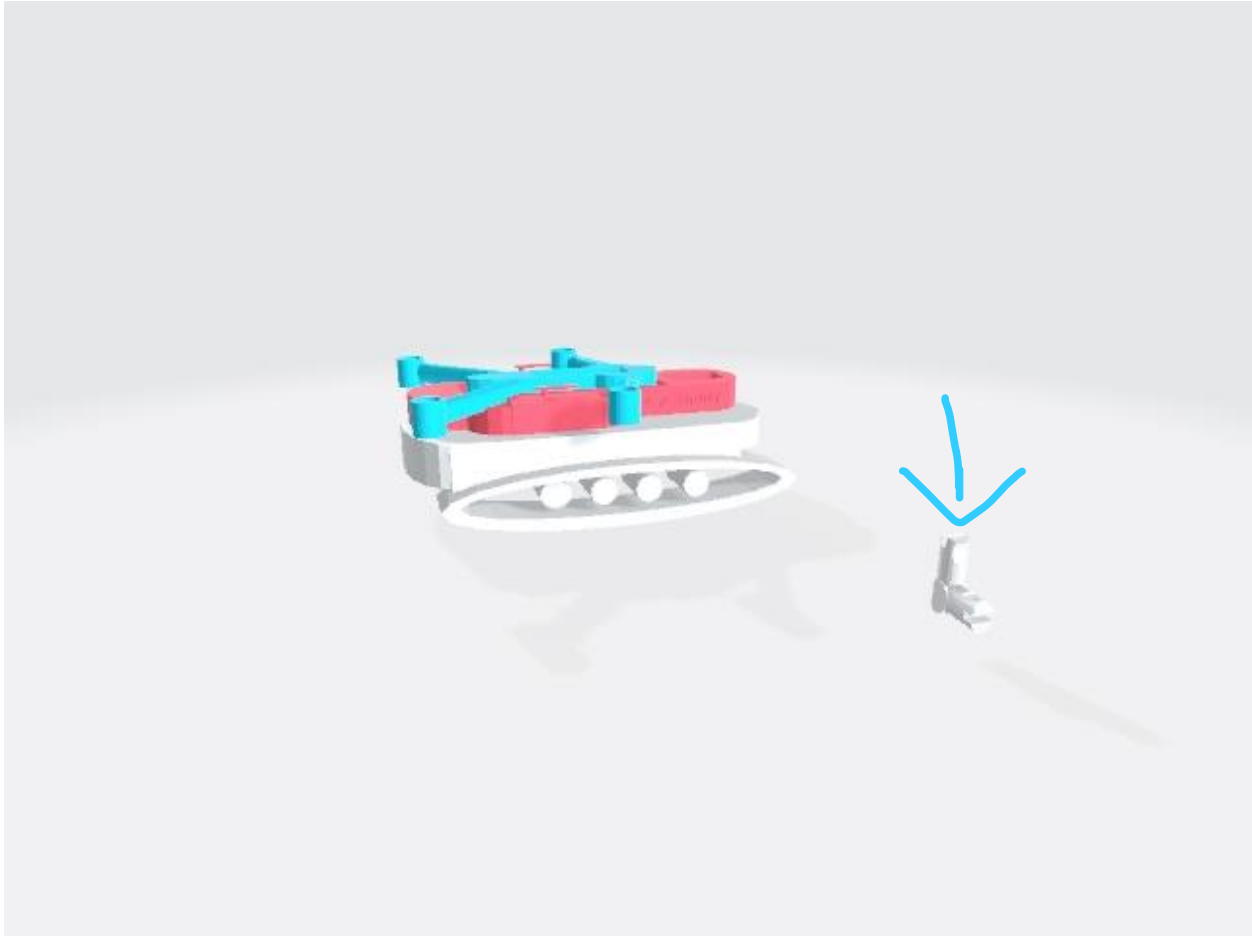


Robo Royals 67671 A

Anthony G.

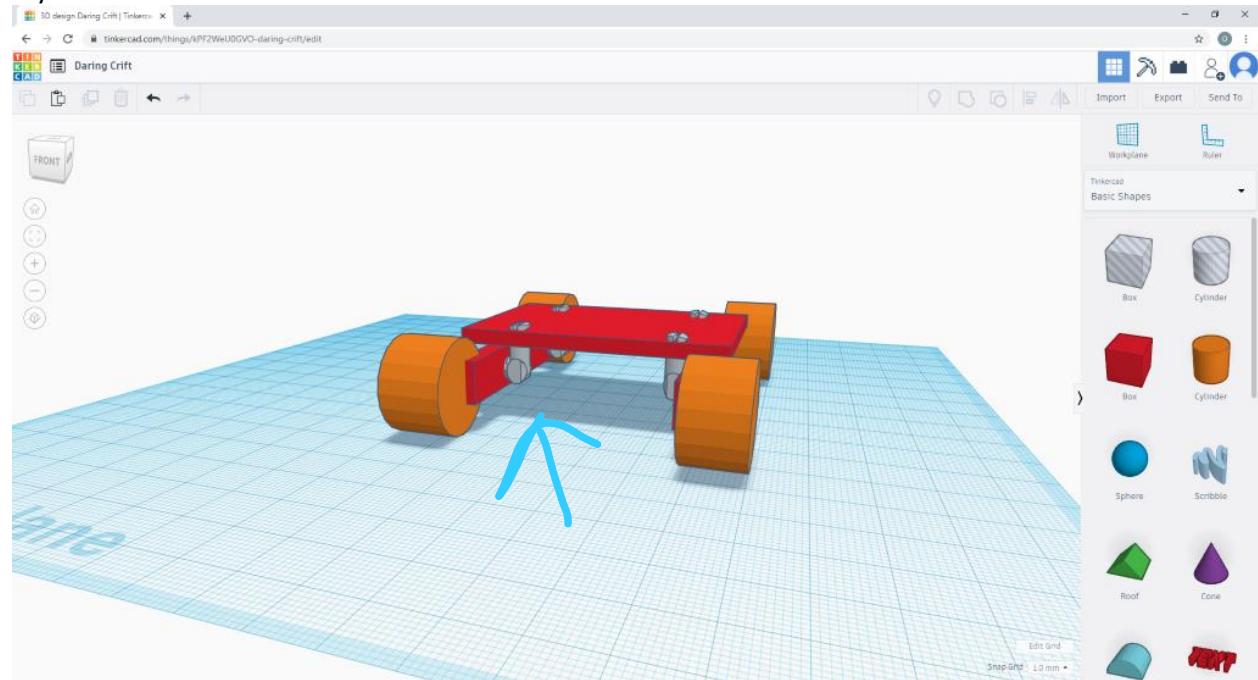
Jayden R.



Robo Royals 67671 A

Anthony G.

Jayden R.



The part we made is used for attaching parts of robot at a 90 degree angle without using an angle block. This helps make the process of building simpler and makes putting on a side of the robot faster. This part will make a good reinforcement piece because it is small, does not get in the way of building, and you can use it for making a fast and simple drivetrain as well as making a base holder for the brain of the robot.

Here is an example of how we would use the 90 degree connector. We designed a drone launcher. The drone launcher is a device made to carry drones to places that it can't fly this might look like something inconvenient but to all the drone lovers it is a beauty. This object is made with tank like tires for traction. A drone like body to hold the drone and our 90 degree connector which reinforces the walls. This clip holds everything together. This means it's the most important part of the project. In the end this drone launcher might be something important to this new social society. Our 90 degree connector makes all of this possible.