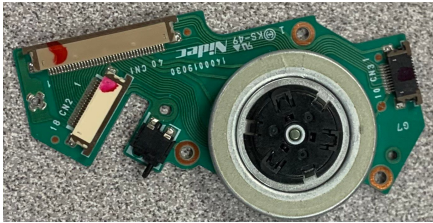
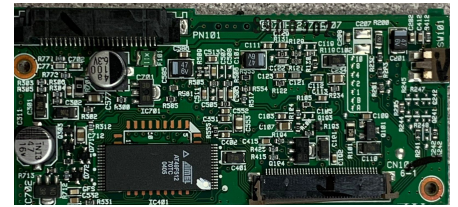


We decided to take apart an Optical disk drive (ODD) as it has less complex components. Inside of the ODD, we found a high-powered laser that reads disks, the disk is read when a small wheel spins. In our case, ours used a laser to read the data that was imprinted onto the disk. The components do not use any TI (Texas Instruments) components.

Disk-Spinner



High-Powered Laser



Circuit-Board Disk Drives are used for storage, reading data, imprinting data. This data is read or imprinted by using a high-powered laser.