

# TEAM 2014K: THE SHADOW MUSKETEERS

## *Electronics Online Challenge*

### *Sponsored by Texas Instrument*

By Aathik

## DISASSEMBLING THE NOKIA PHONE

---

I selected a Nokia mobile phone. This phone is a compact and small phone and it is the Nokia 6303 model. I chose this device because it was an old mobile phone and I was curious to see how it works. Also, it is the only old phone my dad would allow me to disassemble! This concludes the introduction to the device I selected.



*Figure 2: Nokia Phone 6303*



*Figure 1: Fully disassembled Nokia phone*

I disassembling the Nokia phone by using small screw drivers, with special tips. First, I un-screwed the screws so I could take apart the phone. Then, I opened the parts by lifting and sliding them with a flat screwdriver. After this, I took apart the phone into smaller pieces and observes them.

# FINDINGS

---

The first component to the phone was a BL-5CT battery (figure 1) at the back of the phone. The battery gives the phone power and energy to work. The second component to this device was a keypad (figure 2). The keypad allows people to dial in the number they want to call.

After this, I found a chip which had sensing items so when a number was dialed, it would record that number in the memory implant (figure 3). The memory implant was very small but, it holds lots of memory and data, so the phone remembers data and dialed numbers.

Another component to the phone was the screen and the screen cover (figure 4). These show the images of the person you are calling. The screen cover protects the screen from breaking. The last component I discovered was a camera (figure 5). The camera was very small, and it is used to show images of you or the user.

There also was a Texas instrument (figure 7) included in this device. This must be the brain for the phone.

This concludes the summary of the components in my device and what they do.

# CONCLUSION

---

The lesson that I learnt from this experiment are firstly that everything in this device plays an important role so the device will work and if you change one of these variables, it could make the device not work anymore. This concludes my whole report on this device.

# PARTS

---



*Figure1: Battery*



*Figure2: Cover and Keypad*



*Figure3: Memory*



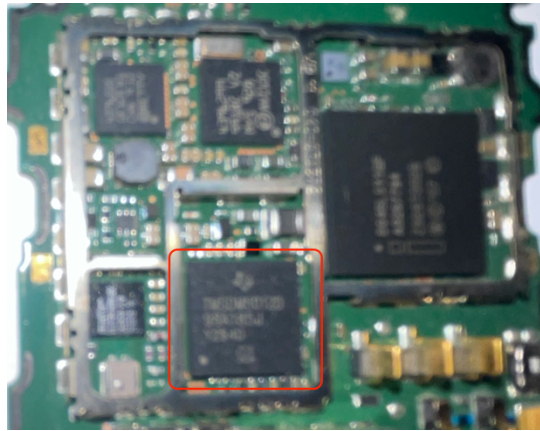
*Figure 4: Screen*



*Figure 5: Micro Camera*



*Figure 6: Phone Light*



*Figure7: Main board with Texas Instrument*