

I chose the Arlo Wireless Home Security Camera because I looked through many different electronics, none of which had IC's, before I found multiple Arlo cameras I could disassemble, and they had multiple interesting components inside. I found:

- M430F5152 Microcontroller - Timer to wake up camera when motion is detected (TI Component)
- Motion Sensor - Alerts Microcontroller when motion is detected
- Camera - Records footage
- IR Lights - Provides IR light for vision at night
- Battery Power Intake - Gets power for device (4 3V batteries)
- Winbond Memory Chips - Saves footage

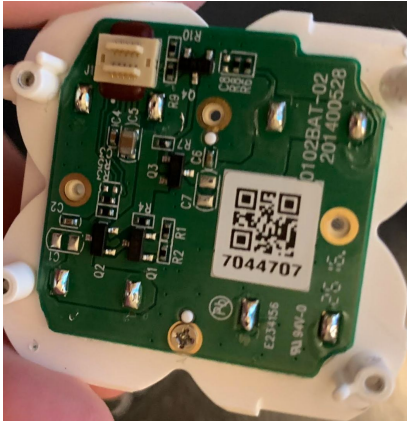
I learned from the experience that I need to be careful when deconstructing to not strip screws, and to get help from my team, because they provided guidance and ideas to overcome problems in the deconstruction. I also learned that although electronics may seem intimidating, many of their components boil down to simple functions.



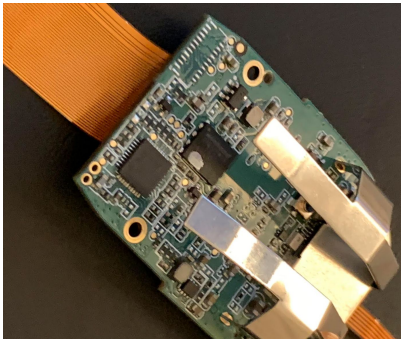
Me (Maxwell Busse) holding Arlo camera



Camera, Motion Sensor, Ir Lights



Battery Power Intake



Microcontroller and Winbond chips