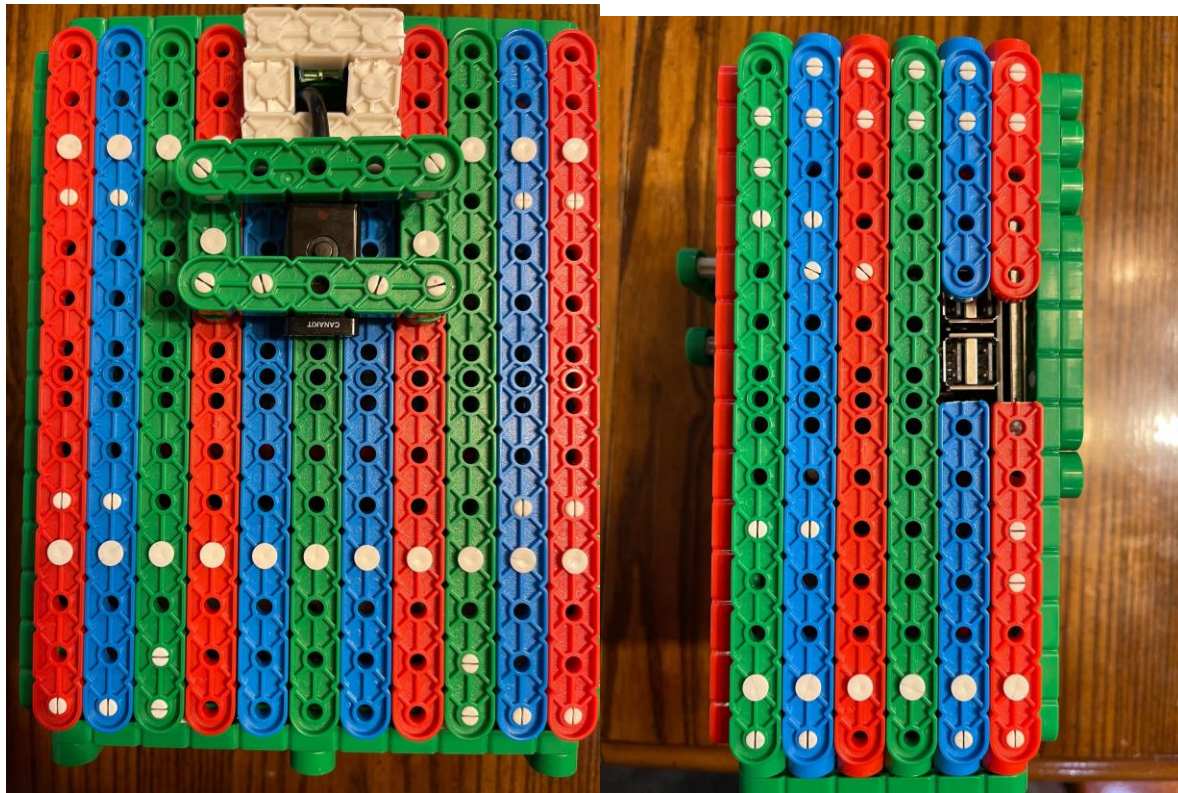
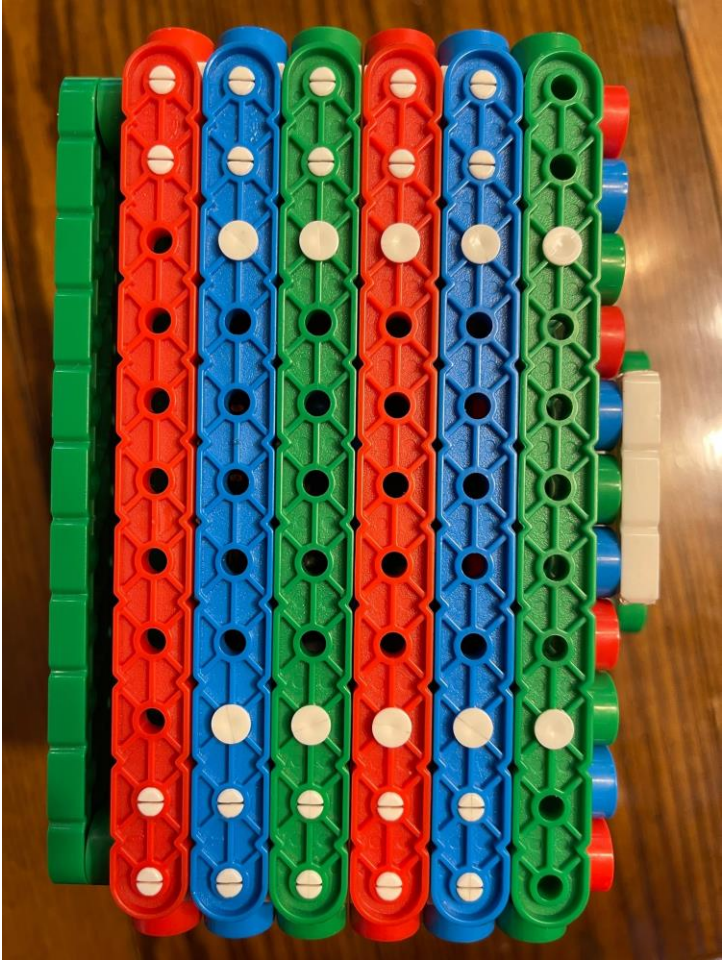


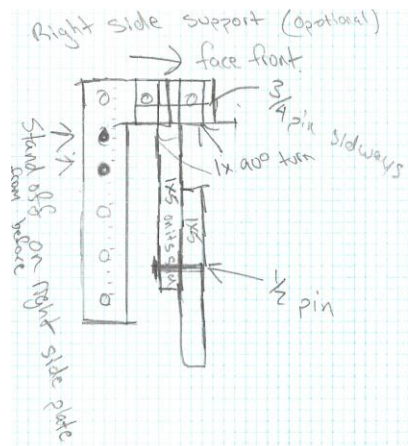
Mini Computer

So the first step is to get all your parts you need which is just the parts from squared away a past IQ competition. Then you need a 5 inch screen compatible for a raspberry pie 3b+ and a Cana kit 3b+ raspberry pie. Then what you do is before you build anything put the screen and the raspberry pie together and ensure that it works. After that you go and start getting you IQ game parts out from there what you do is you start to build each side according to the blueprints shown on page 2 you can also go and use the pictures I have provided so you can double check it. And have fun because when you are done you will have a little computer to play games or search the web.

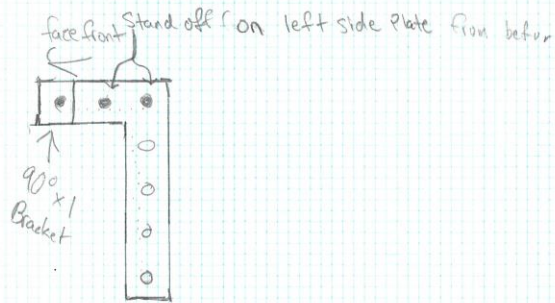






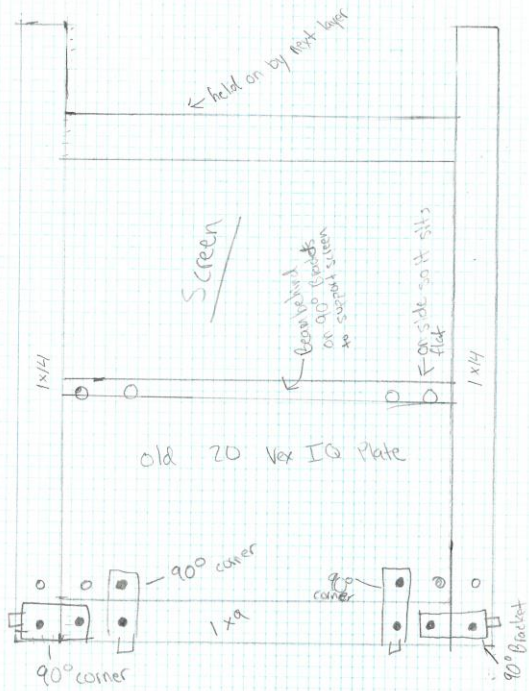


left side screen support (Optional)



Top

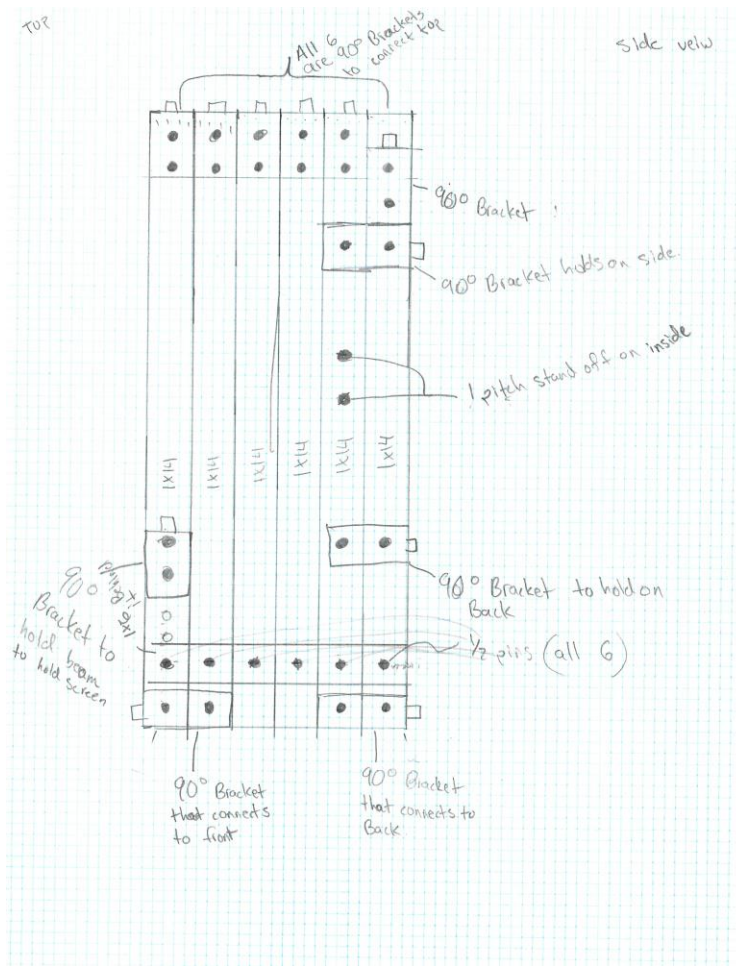
front view



Front plate
Bottom layer

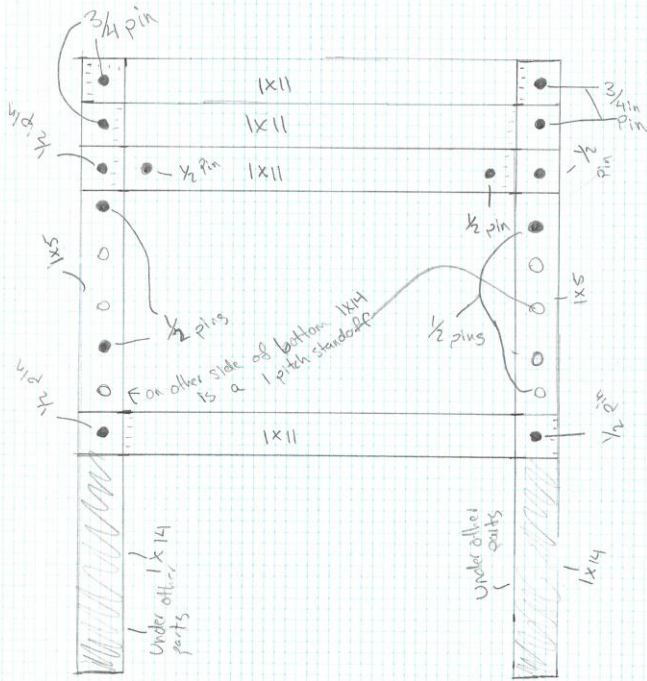
Top

Side view



Top

Front view



Front plate
Top layer

