

# Reverse engineering

Joe Sunkin

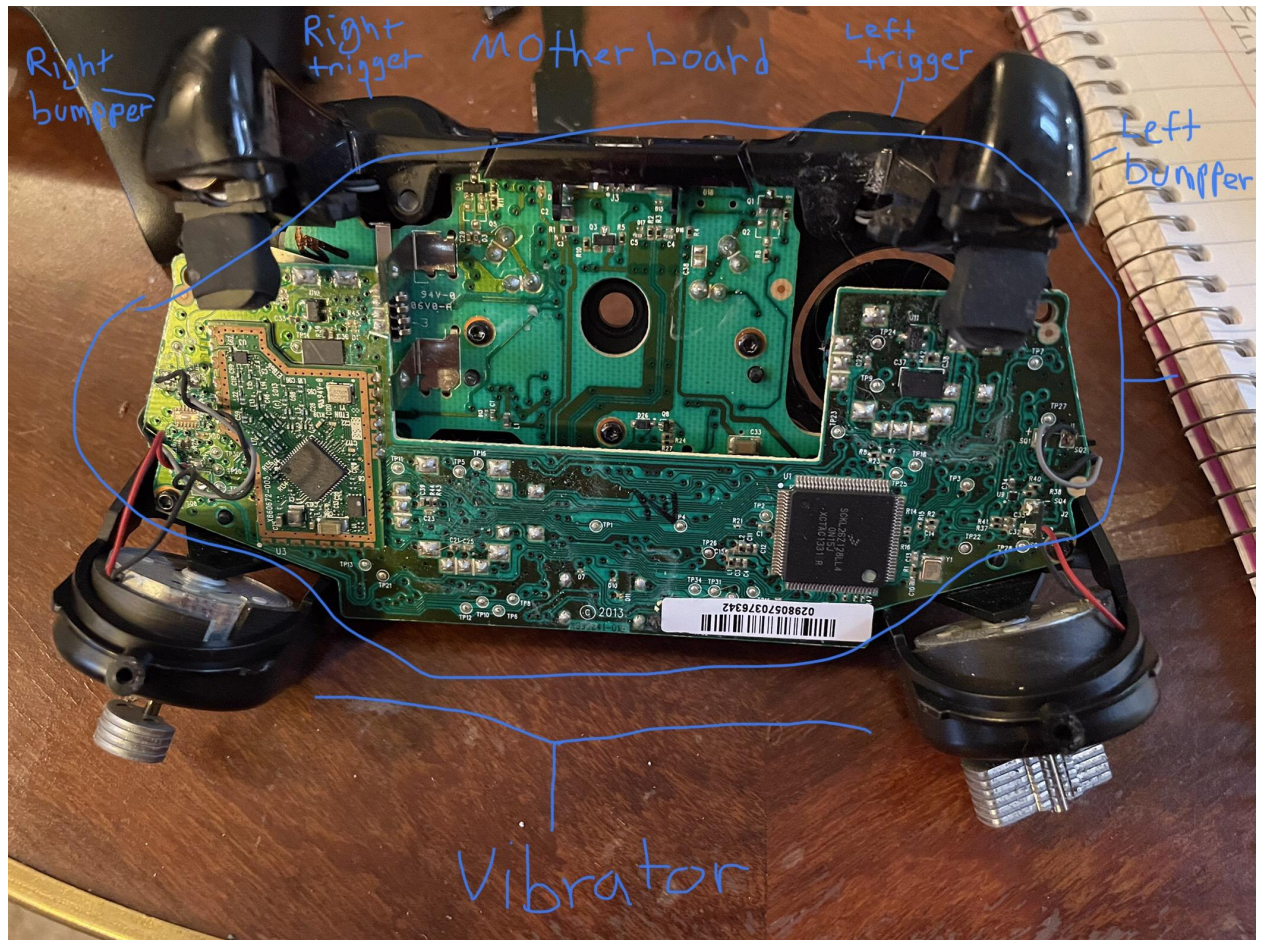
3496b

Revere High School















### Parts list

Home button  
Motherboard  
R/L bumper  
R/L trigger  
A, Y, X, B button  
Joysticks  
Tact switch  
Front and back case  
Screws  
Vibraters

The online challenge I chose was reverse engineering. For the reverse engineering what I picked was an Xbox controller to take apart. I picked to take apart a controller because it was an old controller that I didn't use anymore and it was the only thing that interested me to take apart. Some parts that I found during when I was taking apart the Xbox controller was the motherboard. Other things that I found were vibraters which vibrate the Xbox controller, The tact switch which helps the top bumper work when you push it down, then the main items of the controller which were the D pad the joysticks the home button the bumpers and the triggers, and the X, Y ,A , B button. All these items help you play the Xbox. To power the Xbox controller you use two AA batteries. One thing that I learned from exploring this electronic device was that there's not a lot of electronic components in the Xbox controller.