

“Playstation Portable”



Team Number: AUBIE1

Team Location: Auburn, AL

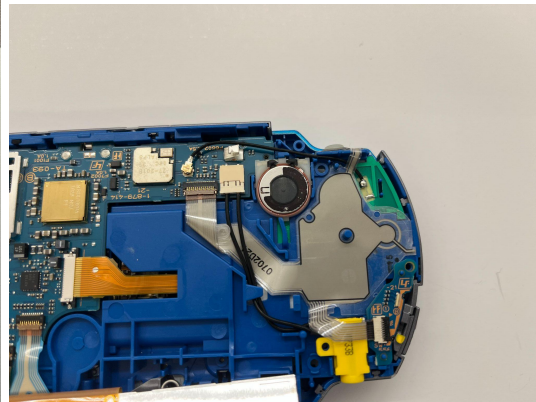
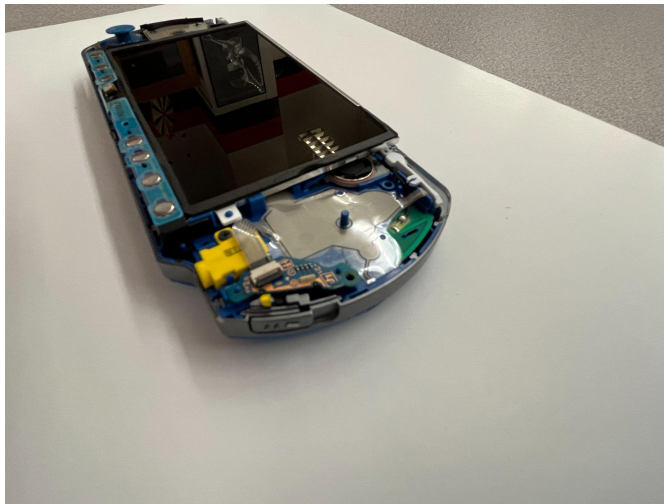
Team Members: Wesley Lowman

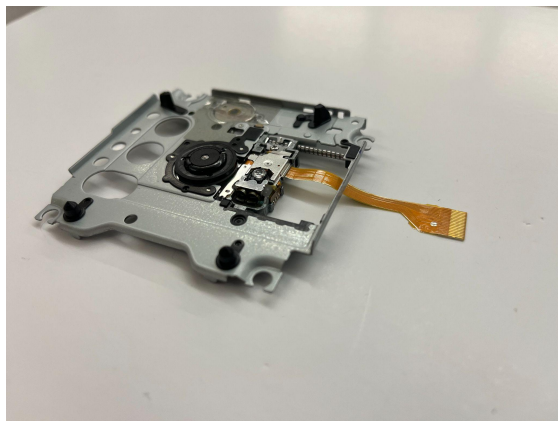
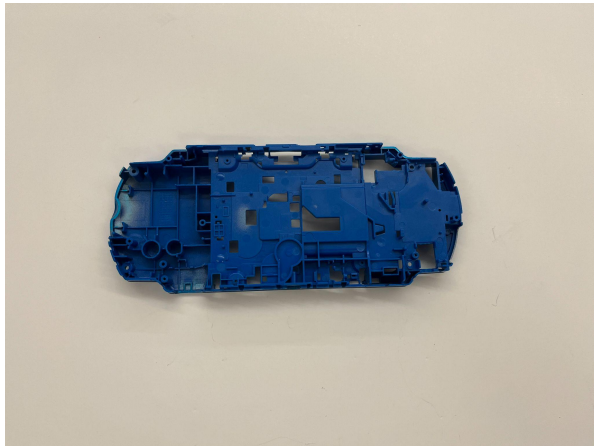
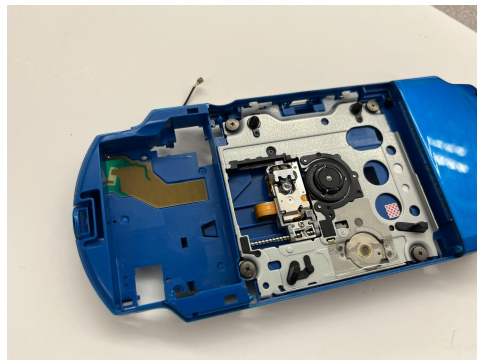
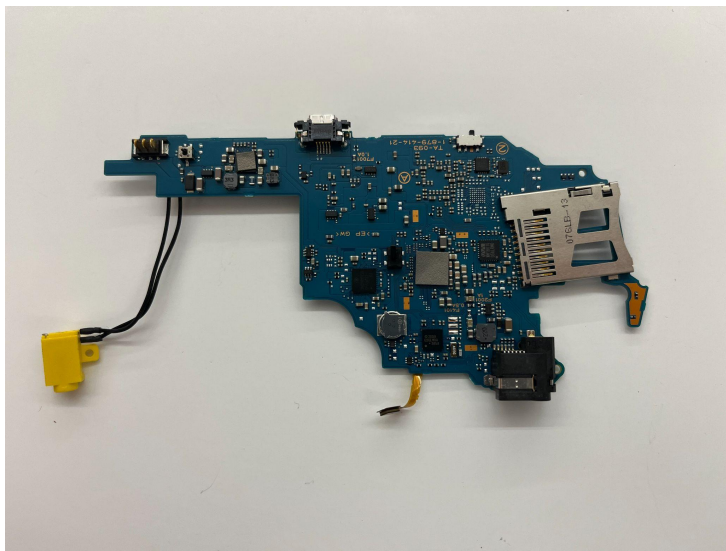
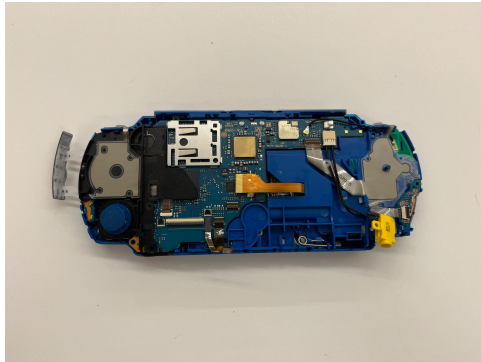
Introduction:

In doing this project, I selected to take apart my old PlayStation Portable for two primary reasons. First, it stopped working several years ago. Second, it was a very innovative device that was ahead of its time.

Components and Photos of the Deconstruction Process:

When deconstructing this device, I found various electronic and non-electronic components. Non-electronic components included physical buttons and the console shell. Electronic components included the motherboard itself, the power supply, CPU processor, RAM chip, and LCD screen.





Summary Report:

In conclusion I found this to be a very beneficial project. As someone who had not taken apart any devices before, I look forward to doing this in the future. I learned various concepts about safety, components of an electronic device, and how components of an electronic device work together to create something that provides value to its users. In the end, I believe that everyone should partake in a project like this because it provides an extremely valuable experience to all who participate.