

1. Read the rules:
<https://challenges.robotevents.com/challenge/168/vrc-middle-school-reverse-engineering-online-challenge>
2. Decide on what item you want to reverse engineer with your team mates and then get approval from Dr. Hunter
3. Think about what tools you need to take about your item and write them here:
-screwdriver
4. Take apart your item according to the rules and document here.

Our original controller is shown below:

-top view



-back view



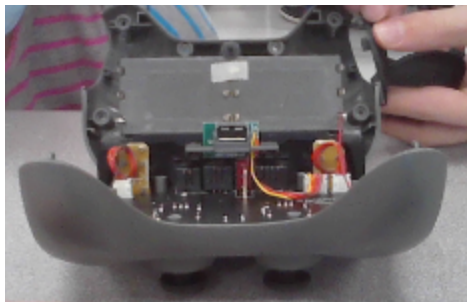
-front view



We then used a screwdriver to remove the battery cover.



Then we used a screwdriver to remove the handle/side, where we found the inside.



We continued to unscrew the inside parts.



We began to unscrew it even more.

