



Top View

0.144-0.164

$\varnothing 0.028$ (M) A

Through

60°

135°

15°

R.13

$\nabla 0.081 \pm 0.02$

Through

R.19

$\nabla 0.169 \pm 0.02$

R.01

$\nabla 0.05 \pm 0.02$

Through

75°

.9

R.04

$\nabla 0.15 \pm 0.02$

R.22

$\nabla 0.05 \pm 0.02$

.2

.11

.06

.14

Front View

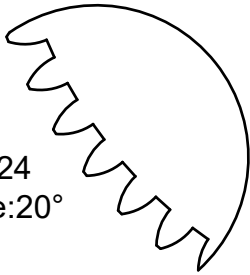
.25

2.58

A

DETAIL A
SCALE 2:1

Diematral Pitch:24
Preassure Angle:20°

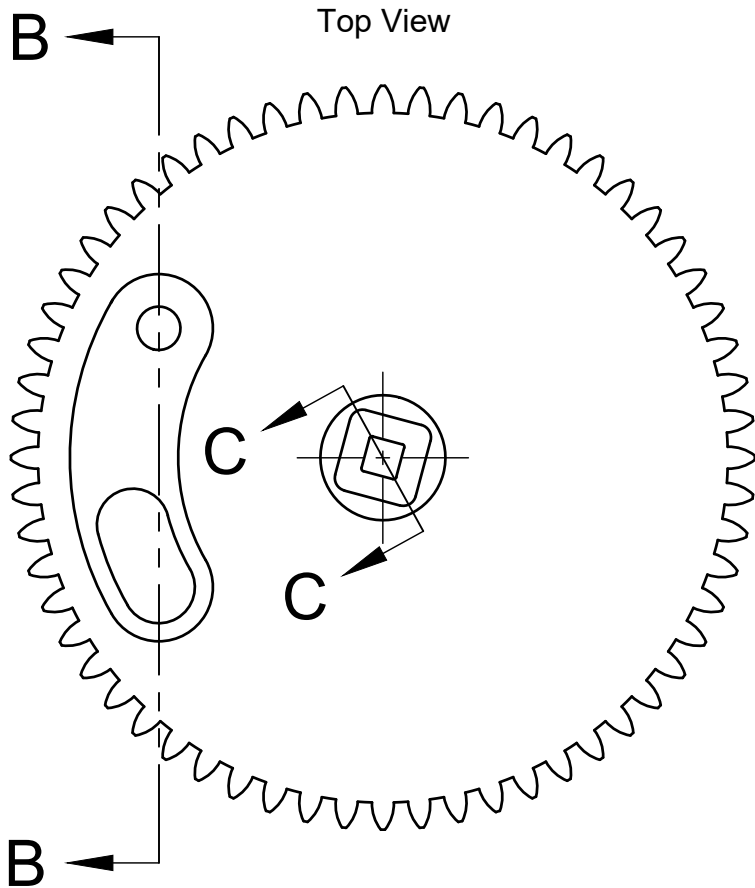


A

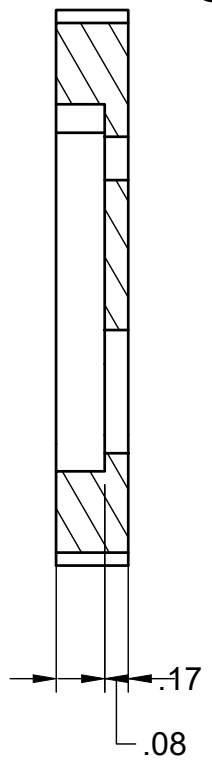
*Tolerances of 1mm=0.5mm=0.002in

	PROJECT			
	Anti-Backlash Gear			
	TITLE			
	Fixed Half-Gear Base Dimensions and Tolerances			
APPROVED Germán Villalongo 1/17/2022	SIZE	CODE	DWG NO	REV
CHECKED James Ackerman 1/16/2022	A	1A	1	
DRAWN Miguel Fernández 1/10/2022	SCALE 1:1	WEIGHT 22.0g	SHEET 1/6	

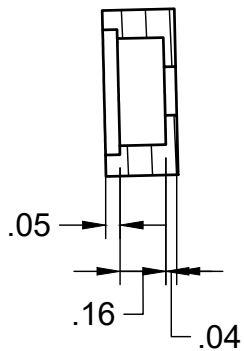




**SECTION B-B
SCALE 1.5:1**

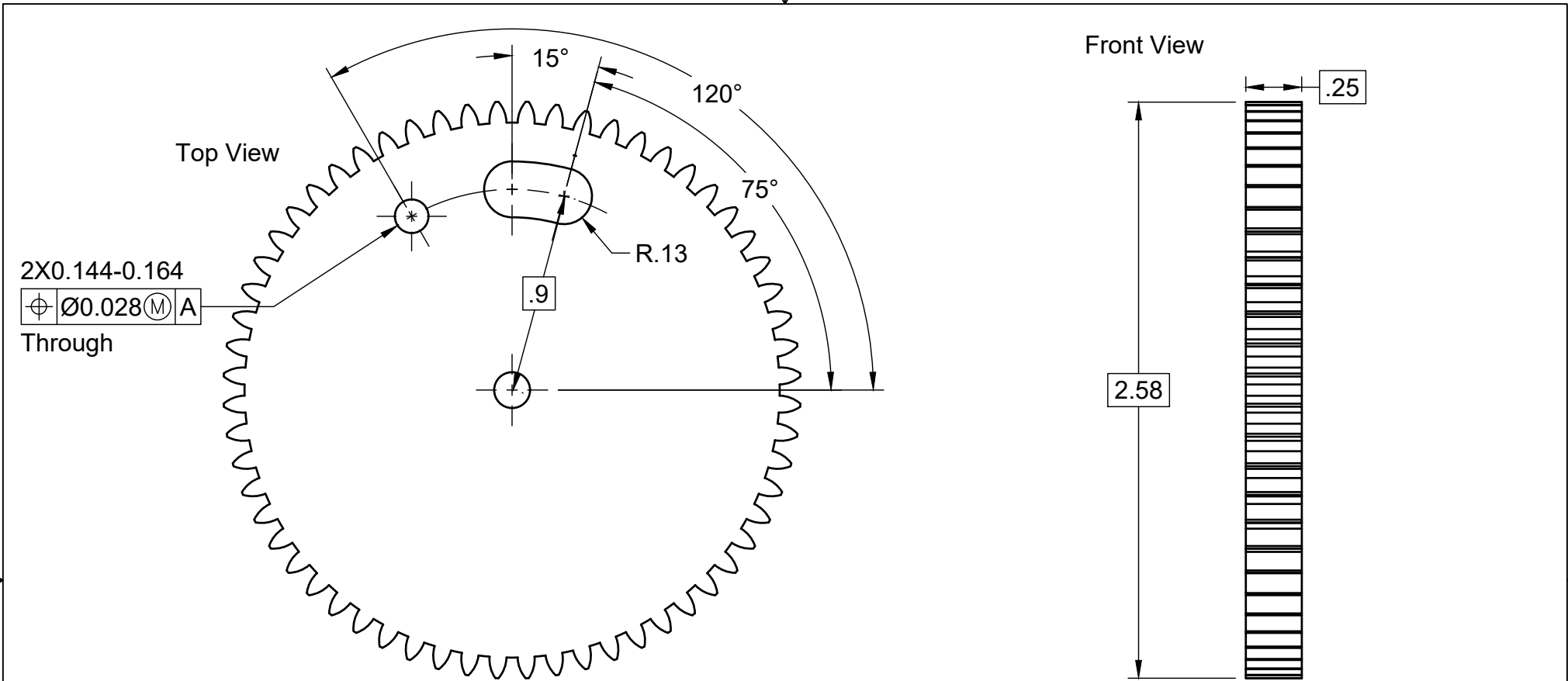


**SECTION C-C
SCALE 1.5:1**



*Tolerances of 1mm=0.5mm=0.002in

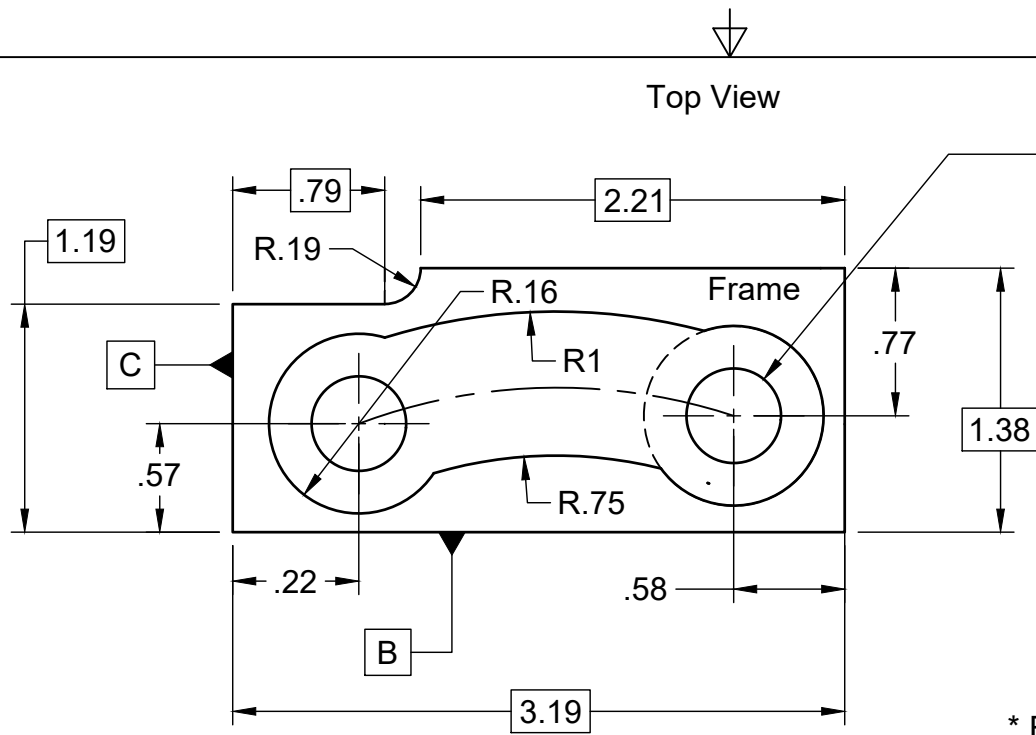
	PROJECT							
	Anti-Backlash Gear							
	TITLE							
	Fixed-Half Gear Slot and Insert Cross Sections							
APPROVED	Germán Villalongo	1/17/2022	SIZE	CODE	DWG NO	REV		
CHECKED	James Ackerman	1/16/2022	A	1B	2			
DRAWN	Miguel Fernandez	1/10/2022	SCALE	1.5:1	WEIGHT	22.0g	SHEET	2/6



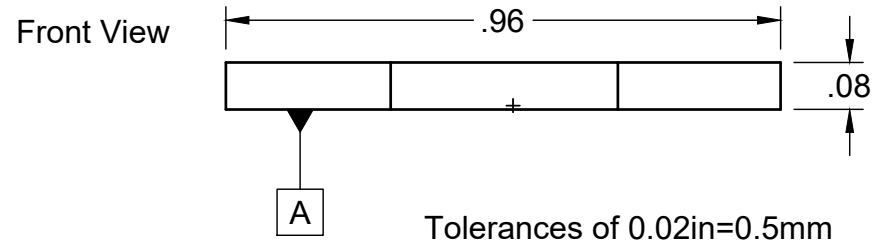
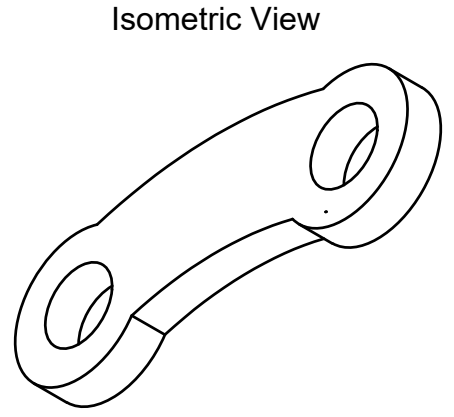
Tooth profile identical to "Fixed-Half Gear" See P.№1

Tolerances of 0.5mm=0.02in

	PROJECT							
	Anti Backlash Gear							
	TITLE							
	Free Half-Gear Base Dimensions and Tolerances							
APPROVED	Germán Villalongo	1/17/2022	SIZE	CODE	DWG NO	REV		
CHECKED	James Ackerman	1/16/2022	A	2	3			
DRAWN	Miguel Fernández	1/10/2022	SCALE	1.5:1	WEIGHT	23.0g	SHEET	3/6



2x 0.144-0.164
 $\text{⌀} \text{ } \text{⌀}0.028 \text{ (M) } \text{A} \text{ B} \text{ C}$

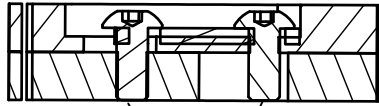


- * Frame designed for proper manufacturing fixation and must be manufactured before the component if not using additive manufacturing (Calendering)
- * Frame dimensions must be scaled down for proper component location
- * Component dimensions are true

Tolerances of 0.02in=0.5mm

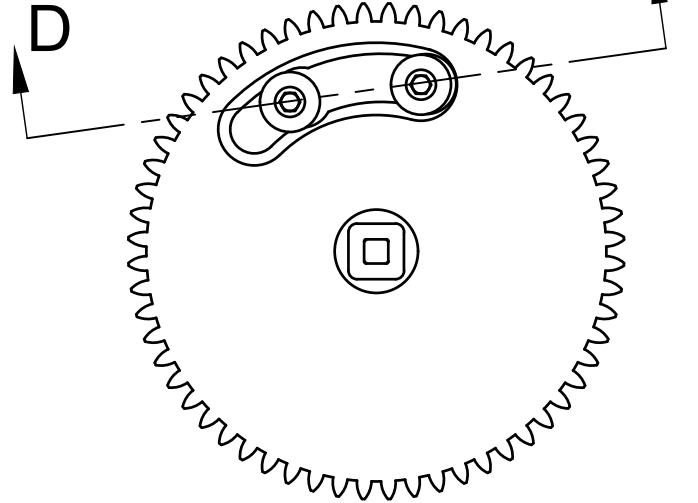
	PROJECT			
	Anti-Backlash Gear			
	TITLE			
	TPU Spring Base Dimensions and Tolerances			
APPROVED Germán Villalongo 1/17/2022	SIZE	CODE	DWG NO	REV
CHECKED James Ackerman 1/16/2022	A	3	4	
DRAWN Miguel Fernández 1/10/2022	SCALE 3:1		WEIGHT 1.0g	SHEET 4/6

**SECTION D-D
SCALE 1:1**

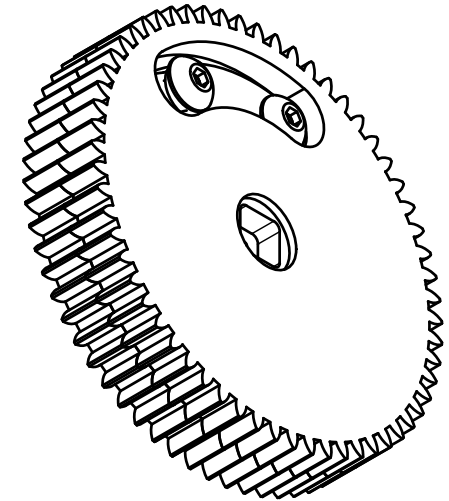


2x 0.365 Screws

Top View



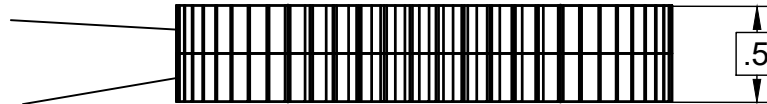
Isometric View



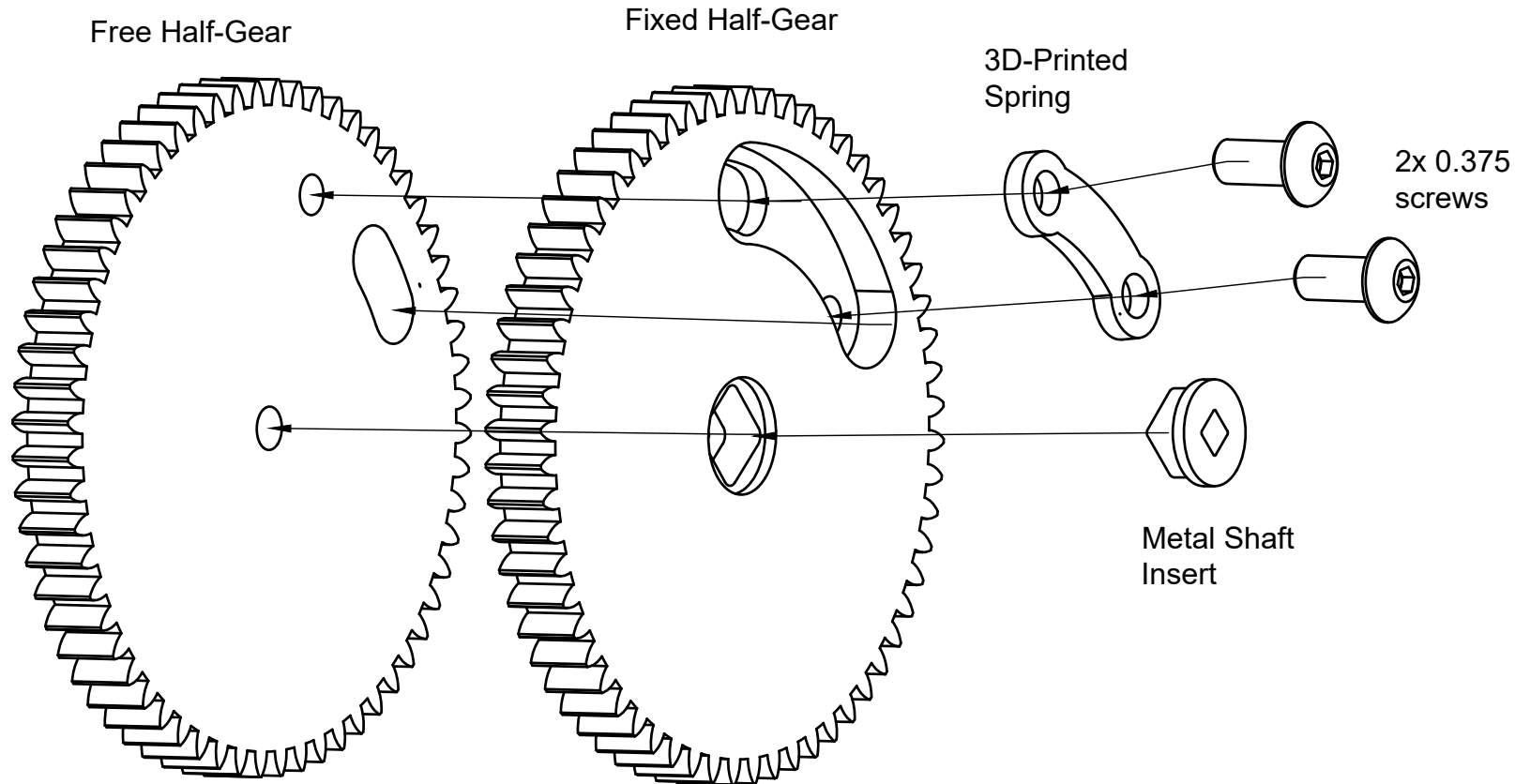
Front View

Fixed Half-Gear

Free Half-Gear



	PROJECT					
	Anti-Backlash Gear					
	TITLE					
	Assembly Views and Dimensions					
APPROVED	Germán Villalongo	1/17/2022	SIZE	CODE	DWG NO	REV
CHECKED	James Ackerman	1/16/2022	A	4A	5	
DRAWN	Miguel Fernandez	1/10/2022	SCALE 1:1		WEIGHT 49.5	SHEET 5/6



		PROJECT					
		Anti-Backlash Gear					
		TITLE					
		Assembly Exploded View					
APPROVED	Germán Villalongo 1/17/2022	SIZE	CODE	DWG NO	REV		
CHECKED	James Ackerman 01/16/2022	A	4B	6			
DRAWN	Miguel Fernandez 1/10/2022	SCALE	1.5:1	WEIGHT	49.5g	SHEET	6/6