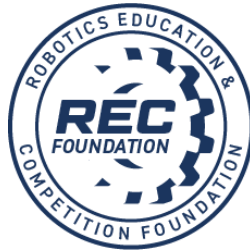
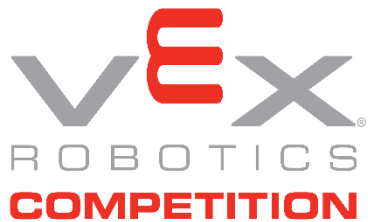
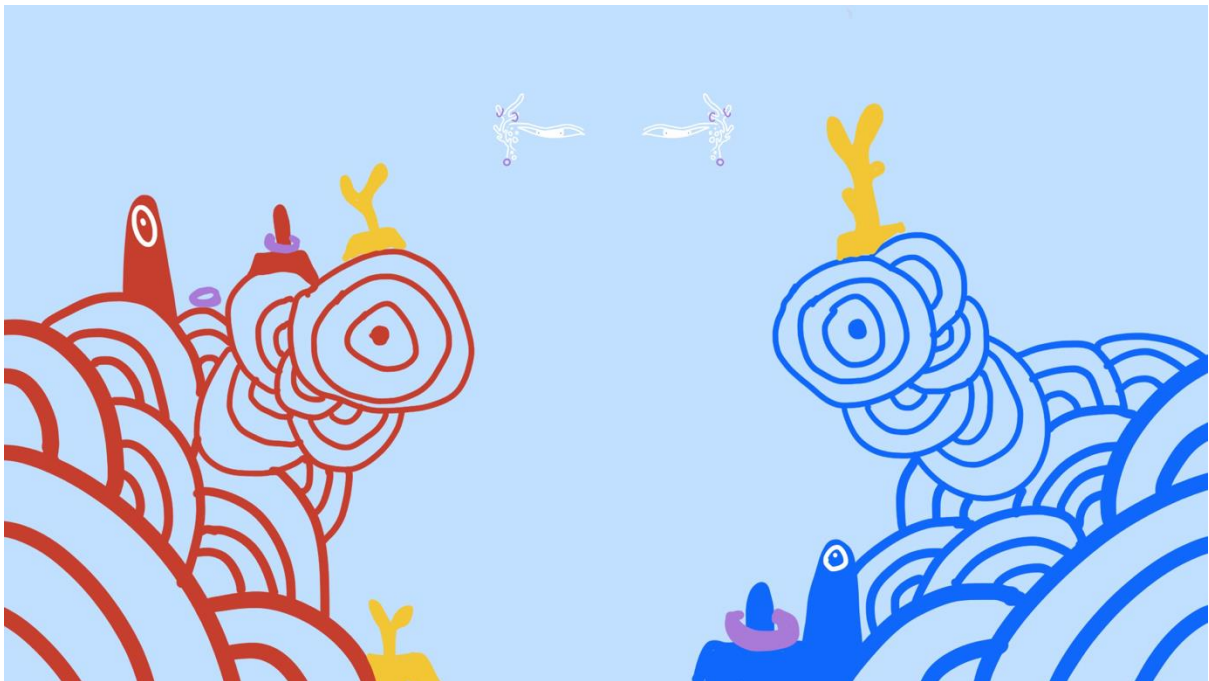


VRC High School Theme It Up Online Challenge 2022



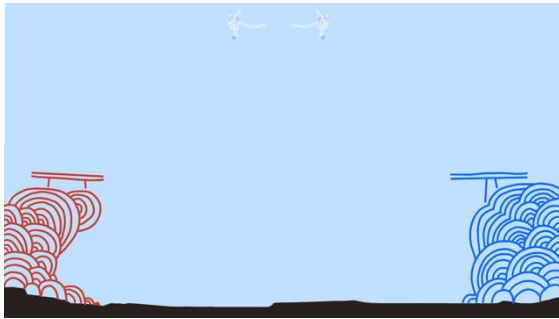
Island Sacrifice



By: Elliot of Team 8059X from Singapore

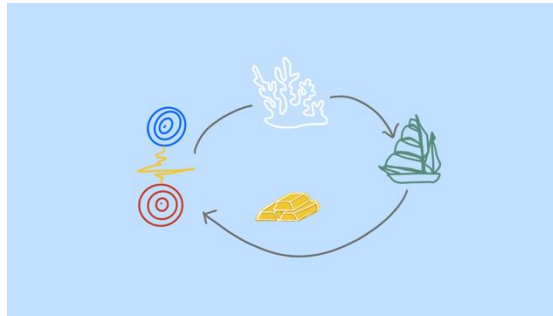
8059BLANK.

A long time ago, a boat of humans washed up on an abandoned chain of islands in the Pacific. Due to their differences, the group fractured into two after some time.



The red tribe, the Pirates, and the blue tribe, the Navy, both named for common nautical groups. Both tribes worshipped Kaliwha, a coral spirit whose likeness they found in the abandoned temples across the islands. They believed that Kaliwha would bring them good fortune and safety from the ocean.

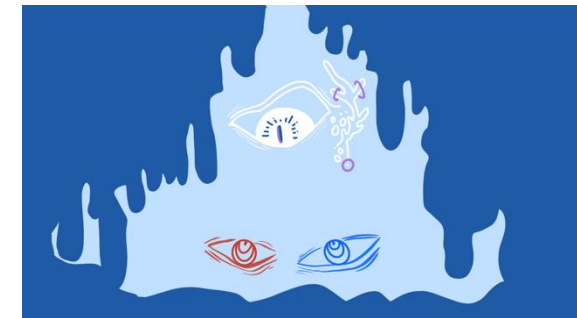
While the tribes used to live fully conscious of nature, they recently discovered coral farming. Allured by the profits a few corals could bring, both tribes delved deeply into coral farming, exhausting the island's entire supply of coral in a matter of years.



This angered the coral spirit Kaliwha, whose body was made up of the island's coral reefs. Kaliwha threatened to destroy both the tribes for their transgression.



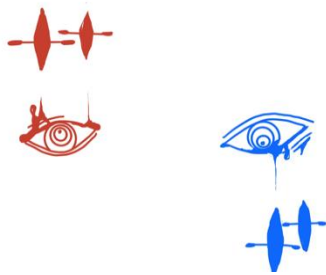
Frightened, the chieftains of either tribe managed to bargain with the spirit, who eventually agreed that he would spare the tribe that gave him a more impressive offering within the next week.



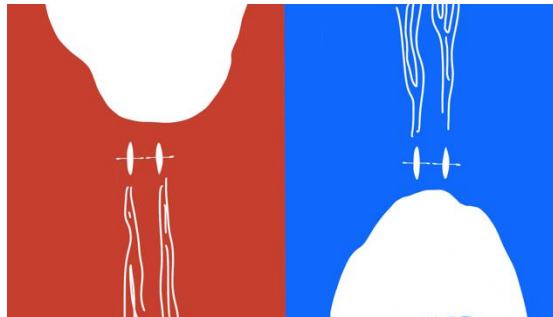
Eager to please the coral spirit, both tribes got to work. Their best craftsmen rapidly crafted offerings, making two small statues in the spirit's likeness each.



While their shaman prepared an offering platform upon which to place their offerings for the coral spirit. Additionally, they sent a pair of their best scouts to find materials to build an offering for the spirit.



However, in the dead of night of the seventh day, the scouting boats of both tribes washed up on a small forgotten island with a crumbling temple in the centre.



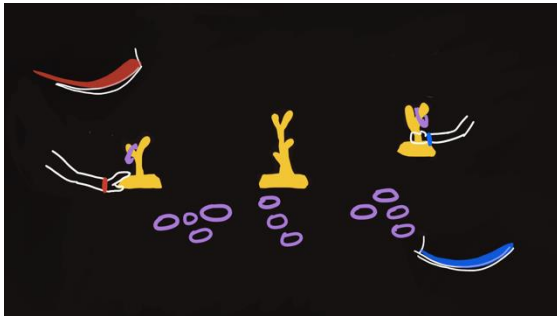
With just over 24 hours left, the two pairs of opposing scouts raced into the temple, and were amazed by what they stumbled across. Inside the temple were three ornate golden statues, and piles of purple jewels littered the floor.



Excited, both scouts began to plan an efficient route for securing as much of the treasure as they could. Not only did they grab the statues, but they picked up as many of the jewels as they could, slotting them into the statues to make them look more glamorous.

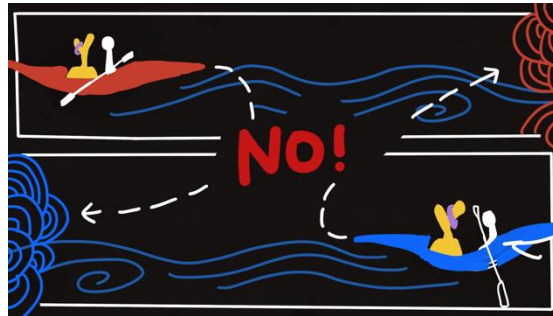


However, as they entered the temple, a sudden gust of wind blew out the torches that lit up the walls, leaving the room in total darkness.



With no way of seeing their opponents or surroundings, the scouts followed the route they had planned just moments before, attempting to grab the statues and return to their islands as fast as possible.

Neither side would attempt to reach the other tribe's island first, as they both knew that would likely result in them being cut off from the temple completely.



After three hours, the sun would begin to rise, and the scouts would be able to explore the freshly lit temple. Noticing the presence of scouts from the opposing tribes, they began to fight for control of the treasure from the temple.

For the next twenty-one hours, they would fight over possession of the statues. Over this period, they would sail to opposing islands, stealing statues that the opposing tribes had secured for themselves. On top of stealing the golden statues from the temple, the scouts would also try to

steal the statues that the opposing tribes had crafted.

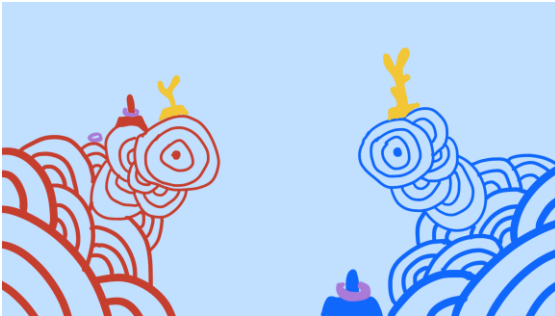


However, if the spirit saw a tribe in possession of another tribe's statues, he would know they had stolen it, and would proceed to sink their island to limit their conflict. Thus, tribes would bury their stolen statues away to hide them from the spirit.



Due to the spirit's severe dislike of conflict, the scouts had to be extremely careful as they battled for possession of the statues.

Even though scouts would sometimes trip, hinder or trap their opponents, they made sure that contact would be too brief to draw the spirit's attention, lasting no longer than five minutes.



Six hours before the Kaliwha expected his sacrifice, the shamans would begin to prepare their offering platform on an island near the temple.

Scouts would use this time to shift their statues into the area, as the area would be considered sanctified for the time period.

If any scouts from the opposing tribe were to disrupt the offering platform, the coral spirit would be filled with rage at their disrespect and sink their islands.

After 24 hours, Kaliwha will observe the tributes presented by the two tribes. He holds any statues on a tribe's island in equal regard, but will particularly favour those in the offering platform.

He will be pleased by any jewels that have been attached to the statues, and particularly delighted the further up these jewels are placed.



After Kaliwha has considered the tribute of both tribes, he sinks the island of the tribe who has failed to please him, before returning to his slumber.

