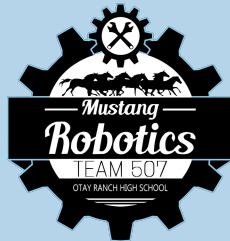


507E BECOME - GIRL POWERED

MUSTANG ROBOTICS - 507E

CHULA VISTA, CALIFORNIA

BY: SOFIA PANTOJA AND SHANNON YEOW



1

INTRODUCING 507E



MEET 507E



Sofia Pantoja
Engineer



Shannon Yeow
Programmer



Keenan Mendoza
Engineer



Daniel Park
Engineer



Keiko Vlaming
Manager



Anna Jeckoy
Manager

507E

507E is comprised of a diverse group of girls and boys that work in unison to efficiently complete various tasks, compete in VEX Robotics, and BECOME the new image of what STEM looks like.

Girl Powered - BECOME

**BEING
EQUAL
CHANGING
OUR
MENTALITY
ENTIRELY**



2 JOURNEY THROUGH MUSTANG ROBOTICS



What We Think:

BECOME is what Mustang Robotics represents in our team and what we think of when we think of Girl Powered. We are 507E where we have a mix of both girls and boys members and we have been redefining what the ordinary robotics team might look like. We believe that both men and women members have their own unique important perspective that must be heard and taken into account of. Thus in our team we have a girl members in every position from engineers to programmer to managers. This has allowed us to establish a diverse and rich perspective while collaborating with the other guys in our team.. Others may see only one way to do things although in 507E we see that we must change our mentality and show that we are stronger together than separate. To ensure this inclusive team dynamic, 507E has open communication and we consider biggest strength. Even during these difficult times with pandemic we know we can always rely our robotics family which is a welcoming and accepting community.



Team Picture of 507E

Being On The Team:

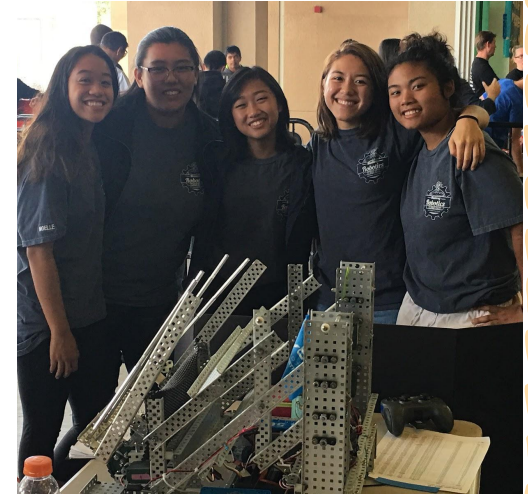
507E BECOME an inclusive environment that is supporting the future leaders and innovators of the world with both women and men in STEM. When we all tried out for this program we all had a choice to be an engineer, programmer, or manager. We were tested on our skills, abilities to learn, and capability to work as a team and we were all put together on a team because we were decided to be the best mix of girls and boys working together to get the job done. In our team our perspectives may be different but we all bring to the table our own abilities and ideas that we don't all share. As a result our team has had a 4:2 girls to boys ratio on our team as our ideologies all combined well to further collaborate. Especially shown in our gender unrestricted team roles as we have a girl engineer, programmer, and manager when those roles might have been all males in other teams. This has allowed us to have a unique mix into the engineering process and have that ability to adapt and work with one another in different ways. No matter who you are on our team we are able to share everything we know and your gender or position everyone will be allowed to explain their unique perspectives of a situation or design. Thus, even though members try out and receive a role on the team, they are never limited to just that. This is because, in 507E, we believe that everyone should have an equal chance to discover their passions and have a positive impact on their team.



Picture of how the classroom is yearly when just starting on the team. (picture taken before COVID)

Life After Robotics

Throughout a member's journey in Mustang Robotics they are able to gain insight and experience on collaborating with our fellow teammates no matter if they are girls or boys. All of our team is dedicated to this throughout their four years and this continues throughout their future. As they join the workforce or the university they are able to bring their perspective of equality and their hard work to change people's mentality of what may be perceived as the stereotypical male dominance of STEM. Our alumni girls are powerful and make sure their voice is heard and these changes occur. Beyond that our male members also bring with them to their future paths an acceptance of women in fields like engineering. Through their past experience they are able to connect and reconause other females ability. When these alumni come back every year they always constantly encouraging us that they had leonard in our team has created a lasting impact and social change beyond VEX Robotics. It has been beneficial for them, their friends, and even their oppornets.



This picture is a representation of girl powered of past alumni who have now graduated and continued to affect STEM and us.

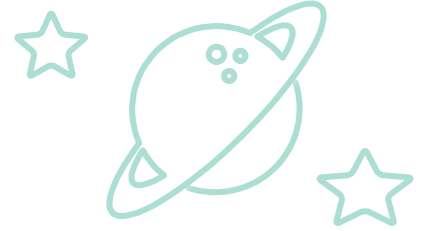
3

ROLE MODEL

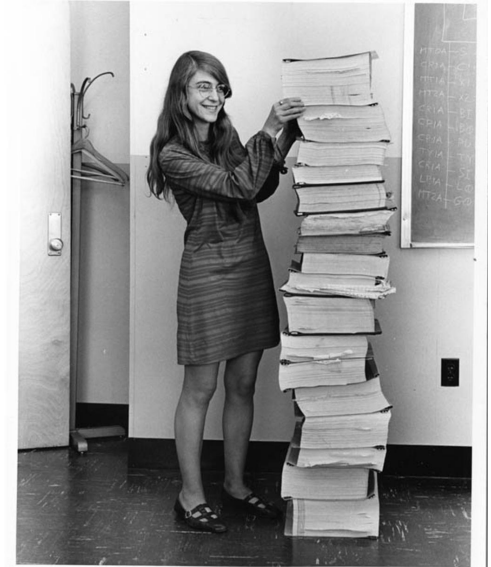




Role Model



Our team's role model is Margaret Hamilton. We are all inspired by the women who established the term Software Engineering. As she also was one of the earliest engineers who made the early Apollo Missions possible. As a robotics team who needed to create robots and program them to come alive, we are amazed to see such a women in STEM be the reasons for the Apollo 11 missions to be a success. She has a part of discovering and uncovering the secrets of the world. The Apollo 11 launch was the milestone in space exploration that I have always learned and seen videos of it made me interested in aerospace engineering. Although especially in engineering many people like only men are represented women are equally seen and learning about this incredible trailblazer showed to me the possibilities./ We have seen her vigour and hard working personality. When others may have treated to stop her from her dreams she learned ways around it and learned something new that change the world. She is living proof that you can accomplish anything, even in a men-dominant field, if you are willing to give it your all. She inspired us to not be scared or intimidated by others that might tell us we can't do something. Instead, we should work hard and continue to learn, so one day, we will have the opportunity to realize our dreams. To even lead the next monumental missions of the aerospace industry like the next launch to for example Mars happen.



Margaret Hamilton with Apollo code.

CREDITS FOR "BECOME"

Title: BECOME

Written by: Sofia Pantoja

Edited by: Shannon Yeow

Team: 507E