

# **DVD Drive**

## **by Vaneses, Alina and Aurora**

### **Team 9629A**

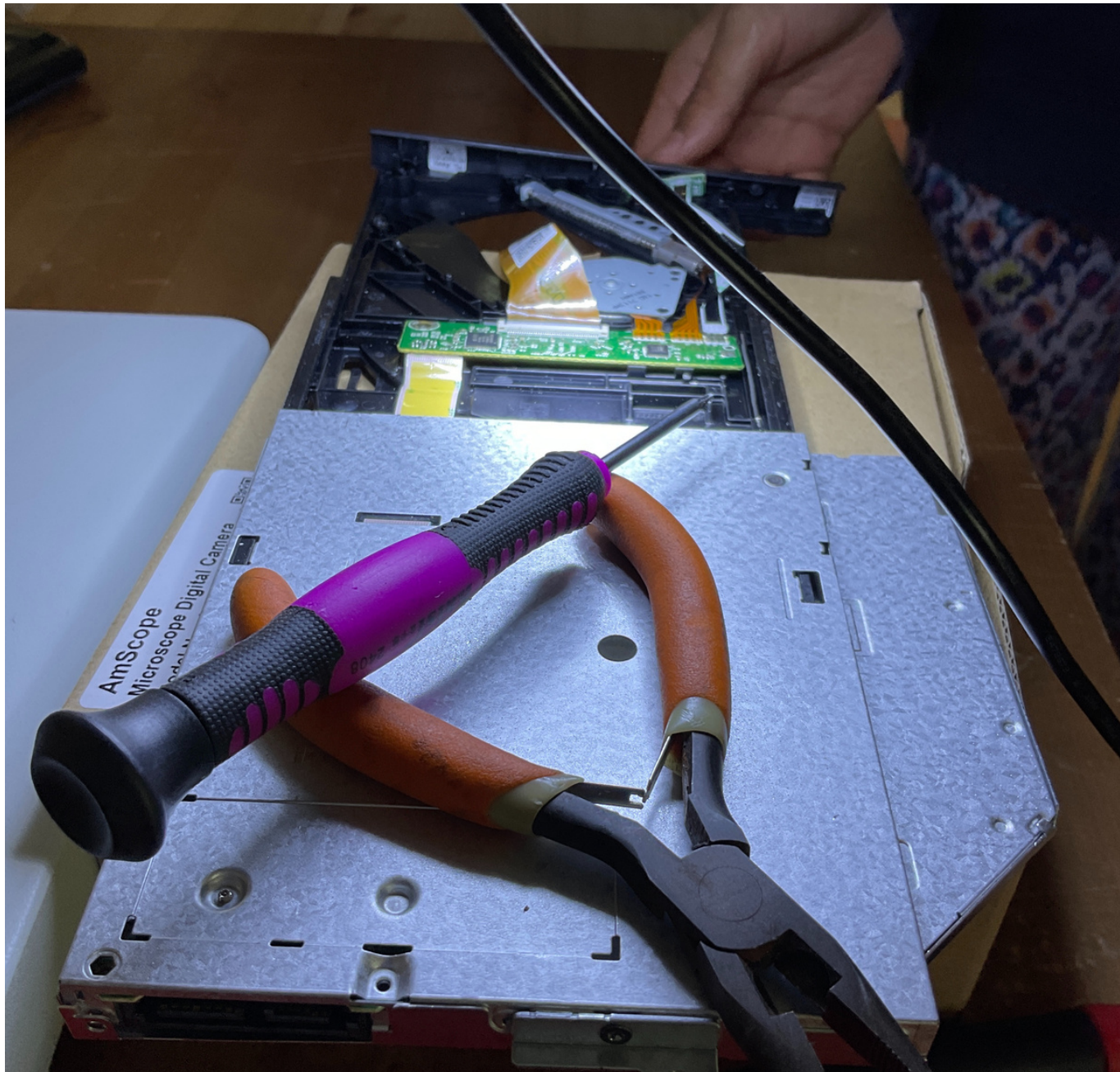
- What is it? (DVD/CD rewritable drive). -
  - Description.
- What parts are there? -
  - Components (Resistors, Capacitors, Connectors, Flat Ribbon).
  - Describe Number Markings (Rs, Cs, VWs, Us, Js).
- Key Components
  - Microprocessor Chip, Laser, Scanner, Lens, Light, Motor, Screw.
- How do the components work together? -

Mediatek is the company that made this  
chip

CHIP FOR DVD DRIVE

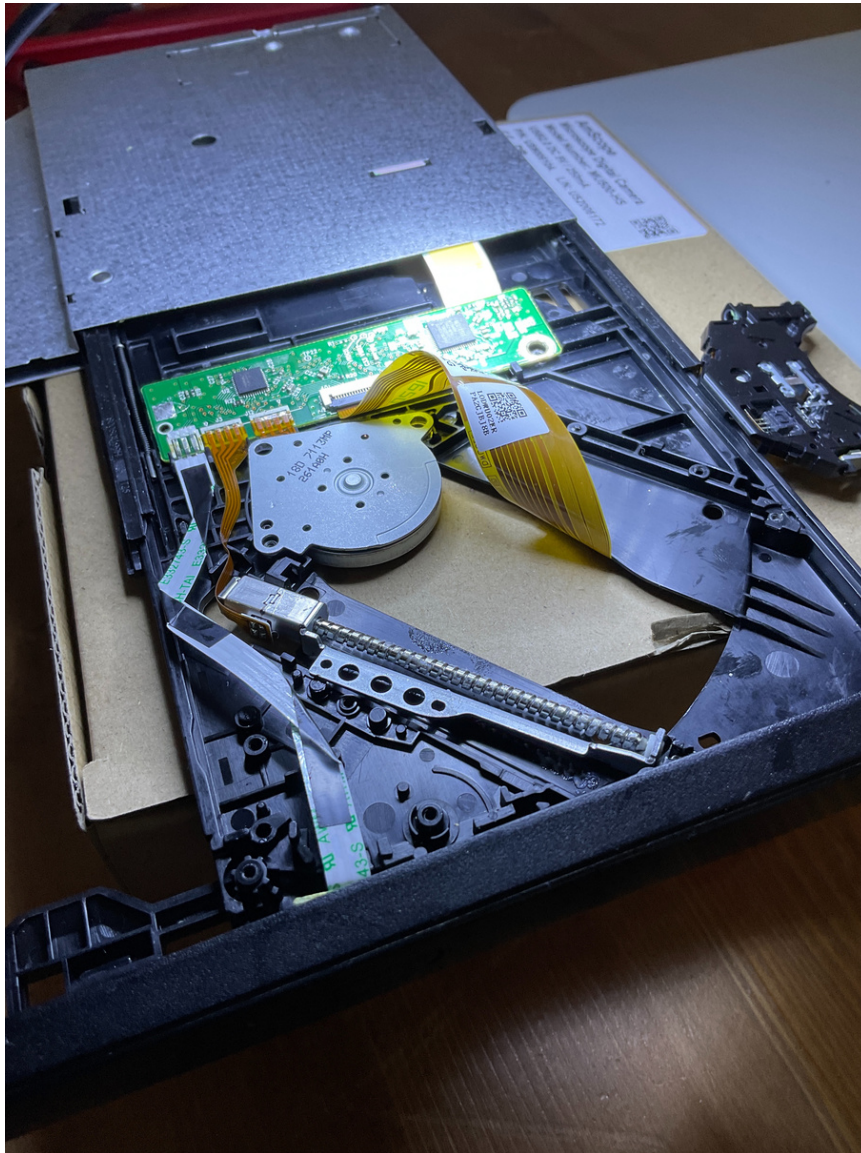


MT1865 is a  
high  
performance  
single-chip  
platform for  
internal  
rewritable  
DVD drive.



Tools used





The Opened  
DVD drive





