

High Strength Lock Bar

Odin Provost

603B ~ I Don't Know

Belmont, New Hampshire

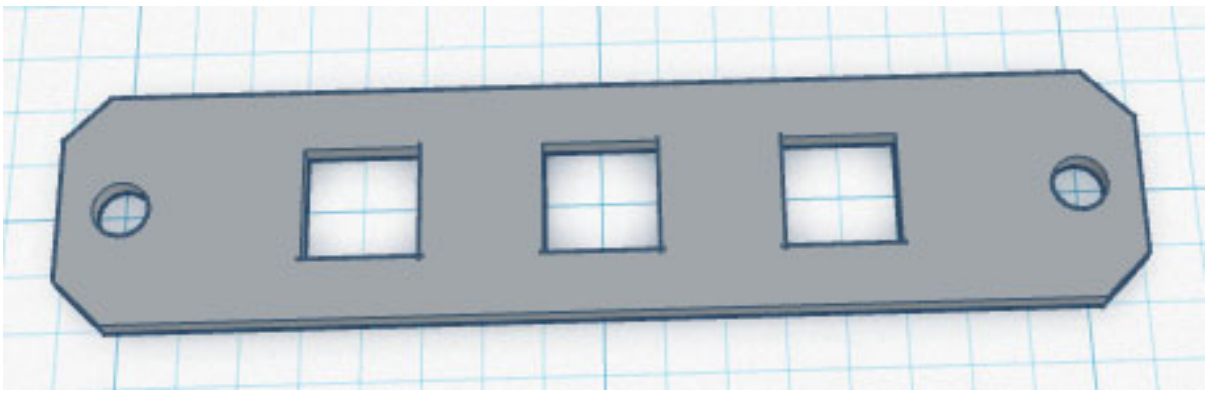


Photo 1: High Strength Lock Bar by itself

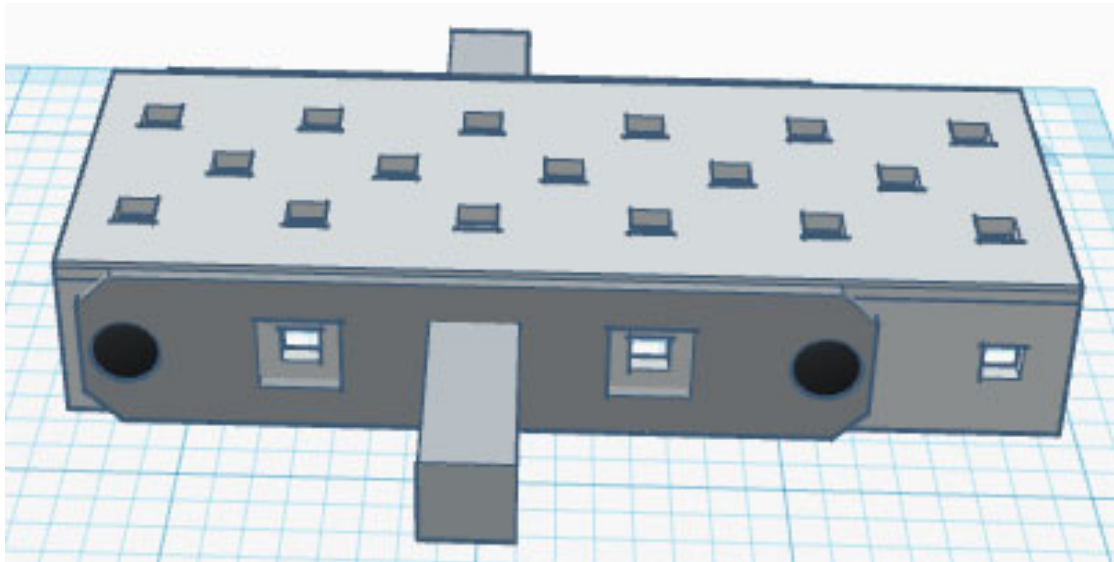


Photo 2: High Strength Lock Bars on a c-channel with an axle

The issue that this part fixes is connecting an axle to a c-channel. The use of the part is simple. Just like the low strength version that exists, the part is used to connect a c-channel to an axle. However, it can also be used to support 60 tooth and above gears. This helps prevent the gears from breaking under a lot of force, such as lifting something heavy.

I used Tinkercad to make my designs. I mostly used flattened squares to make everything, but I also used square holes, cylinders, half spheres, and small hexagons. The cylinders, half spheres, and small hexagons are for the nuts and bolts. I learned how to use Tinkercad efficiently, and I can use this knowledge for other online challenges in the future.