

Blessed Maria Assunta Pallotta Middle School  
3225 West 9th Street  
Waterloo, Iowa



# Vex Reverse Engineering Challenge - Ipad

Keagan Ades Bennett  
Gordon

Team number: 20120A

# Screen Protector

This is the screen is goes on the actual iPad and i where the home button is this is the main screen and when bought mostly come with a screen that protects this one too.



Screen protector

## LCD screen

this is the screen that produces the light and it and first screen of the iPad that, this where videos, text messages, and all those other things you can do on an iPad is displayed and is very sensitive to a drop and could break easily if not protected properly.



LCD screen

# Protection/clamps

The protection screen is the cover to the screen that produces the light. The clamps hold down all of the electronics and they keep all of the tools in place.



Protection/clamps

# Thumbpad

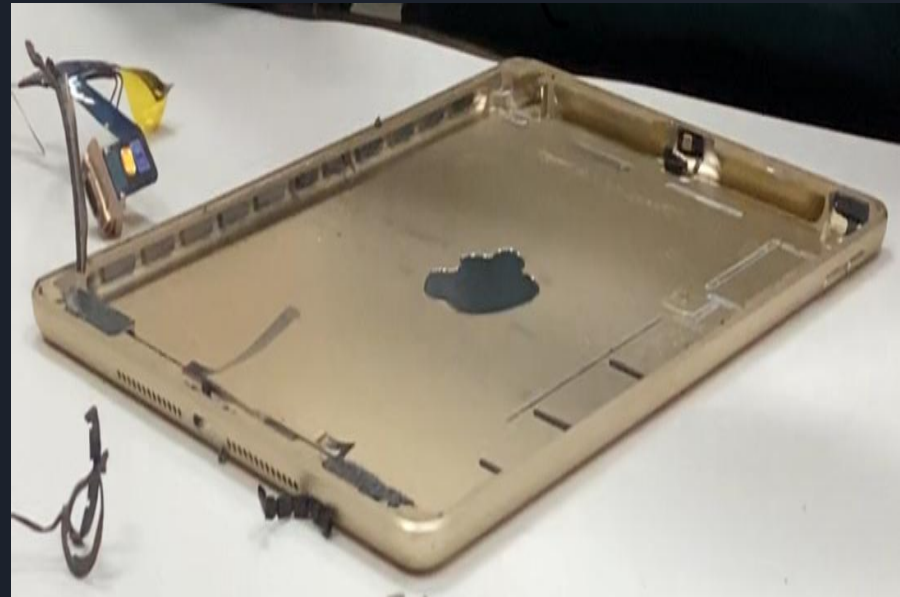
The thumbpad sends signals to the circuit board when it is pressed down and told to turn on the iPad.



Thumbpad

# Frame

The back frame protects the battery and circuit board and all the other stuff from getting damage.



Frame

# Battery

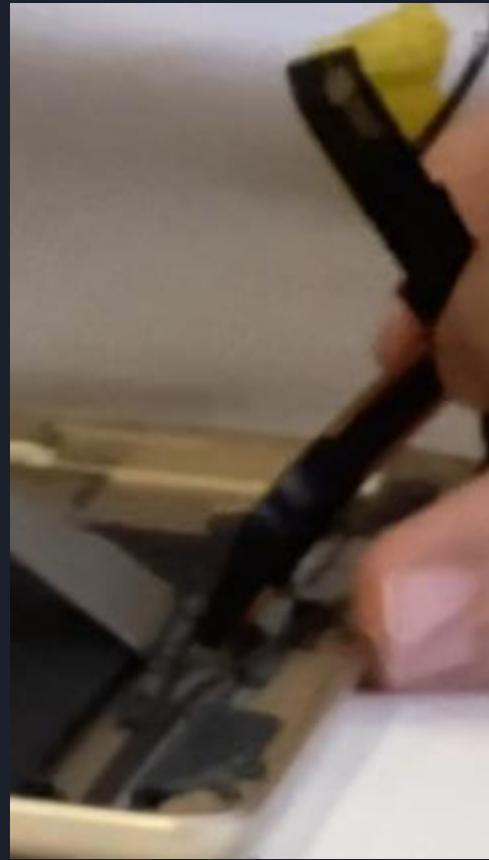
Gets powered when you put the iPad on the charger it holds the power so the power does not overload the other component.



Battery

# Wiring

The signals go through the wiring that connects everything And goes through everything.



Wiring



# Speakers

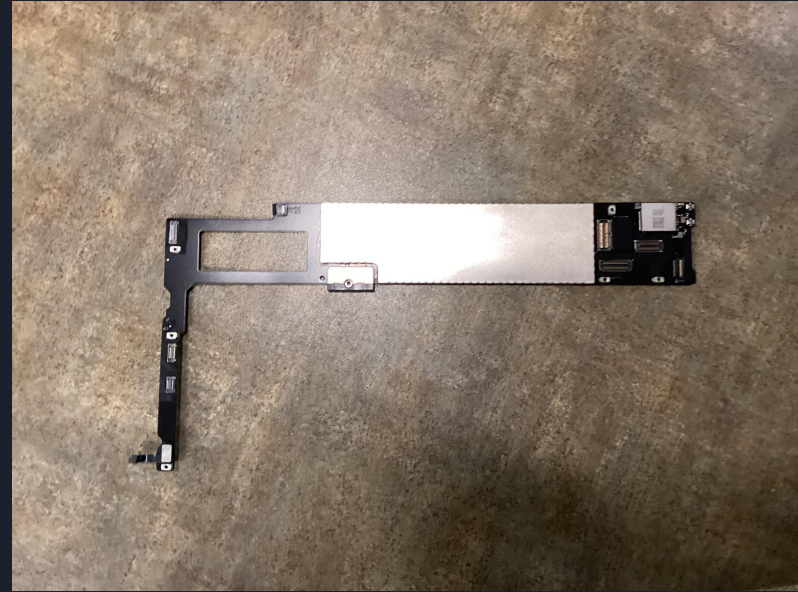
The speakers get sent signals to make a noise that connects with the circuit board to get told what to do.



Speakers

# Circuit board

Gets sent signals and comprehends it and sends other signal to stuff throughout the iPad to tell them what to do.



Circuit board



Wiring

LCD screen



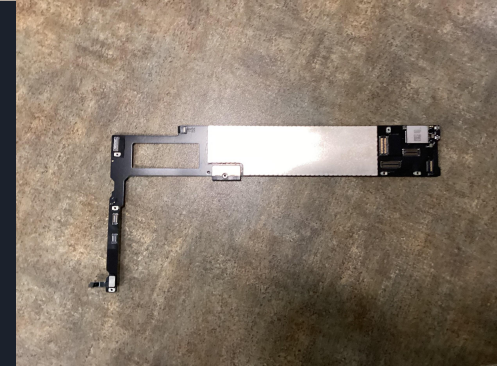
Battery

Clamps protection



Screen

Circuit board





Frame



Speaker



# Our project as a iPad

The project was very fun and both of us had a great time when doing this.