



Girl Power

HBS Vulcans - 10173A
Harini
London

01 *Girl power*

Girl Power

By definition, girl power is 'used in reference to an attitude of independence, confidence and empowerment among women'. To others, it was the union of small girls, dreaming an unrealistic world where society never judged. A world where being strong and clever is feminine; being sporty and confident is feminine. To us girl power is something different. To us the simple phrase 'girl power' gives us hope. A hope for a change. A change where an unrealistic world becomes a wonderful reality and the thick fog of judgment starts to fade. The type of change the wise will welcome for the sake of humanity and equality. A change where one can expect to walk into a once male dominated society and see the diversity. To look up and see no mist, no fog, but victory.

I was taught
that the way
of progress
was neither
swift nor easy

-**Marie Curie**(first woman to
win a nobel prize and first
woman to win a nobel prize
twice)





02

*What girl
power means
to us*



What girl power means to us

To us girl power is more than just a statement. As a team made up of only girls, the phrase 'girl power' helps us show that women are equal to men in intelligence and in professions, including STEM. It helps us prove that any profession, whether it is an engineer, a doctor or mechanic, can also be done just as well if not better by women. It shows us that even though we are female, we can still contribute to the team and build a successful robot. We can still design a robot and programme it to work. This team could never have come this far without everyone's contribution. The phrase 'girl power' motivates and proves to us and to other women that we are a part of the future in the STEM field and the choice is nobodies but our own. To inspire us that we can become the engineers of the future, the helpers, who can build the infrastructure of a modern world. A world of equality.



03 *The Team and Trying Various Roles*

The Team

Nazli

Builder
Driver

Emma

Builder

Julia

Builder
Driver

Eshani

Programmer

Harini

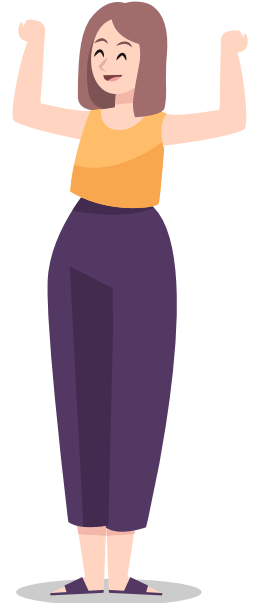
Engineering
notebook

Kashvi

Engineering
notebook

Trying Various Roles

In our team, all the work is divided equally for each person's expertise to get everything done for our competition. However, we know we can't just stick to only what we are good at. We know that maybe one day, our programmer (Eshani) won't be there, so others help. We know that maybe one day, those who do the engineering notebook (Kashvi and Harini) won't be there to record the progress of the robot and note down strategies, so other team members started helping. No matter how good you are at something, everyone makes mistakes, and this is where our team comes together. We work together as a team to make everyone the best they can possibly be, putting our differences aside. As a team of only girls, we try our best to prove to others that this isn't just a field for males, but a field for all, no matter what society has labeled it as. We understand the feeling of being overlooked and underestimated and make sure to build a community where that never happens and everyone has a chance to prove.





04 *Personal Experience*

Personal Experience



Our team, as mentioned before, is an all female team, coming from various parts of the world. In our team, there is someone who's Korean, someone who's Indian, someone who's half Chinese and half Turkish, someone who's Sri Lankan, someone who's half Dutch and half Sri Lankan and someone who's half Portuguese and half Brazilian. As a team consisting of great diversity, entering an area that is male dominated, makes us feel like we represent females and those of colour whose dreams could not be achieved due to society. Our goal to win was not only for ourselves but to prove to others that we, a team of only women and great diversity, can also achieve this dream and make it a reality. To inspire others that they can achieve their dreams no matter their gender or ethnicity.

05 *Diversity in Perspective*

Diversity in Perspective

Diversity in perspective allows our robot to be the best it can be. It helps us see the robot in different ways rather than just one. Everyone in the team is unique in their own way and this helps us improve the robot to the best of our ability. The diversity in perspective also allows us to come together as people as we spend time together discussing the robot from everyone's point of view and how the robot could improve. This helps our teamwork improve as we build stronger relationships that strengthen the team into something special. We take it in turns to lead the group through different parts of designing and building the robot. Those who do the engineering notebook start to lead the design process and take in everyone's idea for a possible robot. The builders then lead as the robot is being made and the programmer leads as the programming starts to be incorporated. We work well together as all of us believe that we are all equal in this team and we all need each other to make the robot successful. We all believe that are different perspectives on the robot help balance our ideas out to something that is truly spectacular.

*She overcame
everything
that was
supposed to
destroy her*

-Sylvester McNutt





06



*Stem Role
Model*



Stem Role Model

Our STEM role model is Rosalind Elsie Franklin. Rosalind Franklin was born on 25th July 1920 and was a British chemist, well known for her discovery of the density and the helical conformation of DNA. Our STEM role model is Rosalind Franklin as we believe that she represents women in STEM and shows the struggle women had to face to achieve their dreams. Discouraged by her own father and called 'stubborn and difficult to supervise' by her own supervisor, Rosalind Franklin persevered through all the hate and discouragement with confidence and determination. James Watson, whose Nobel Prize hinged on her discoveries, called her 'Rosy' against her preference and stated that, because of her 'belligerent moods' colleagues knew that she had to be 'put in place.' Despite those around her, Franklin maintained her scientific acumen and thirst for knowledge, contributing to one of the great discoveries in the 20th century, making her one of the most inspirational women to us and thus being our STEM role model.





We try our best to use our stem role model to empower us and help us reach our full potential as an all girl team. It's very rare to see a woman in stem history who was not wronged and whose achievements were taken seriously. We hope to one day be the change. Everytime we were in a competition, we feel left out, an outsider in a room of people who belong, we remember that our gender does not define us. We, like Rosalind Franklin, will persevere through the comments of others and our own insecurity to bring pride on our own team and hopefully other all girl teams who experience what we do.

Girl Power

By Hanini, London