

Reverse Engineering

8310G, Crosswind Eaglebots. Collierville, Tennessee

Akshit, Dhruv, and Arshjeet

Table of Contents

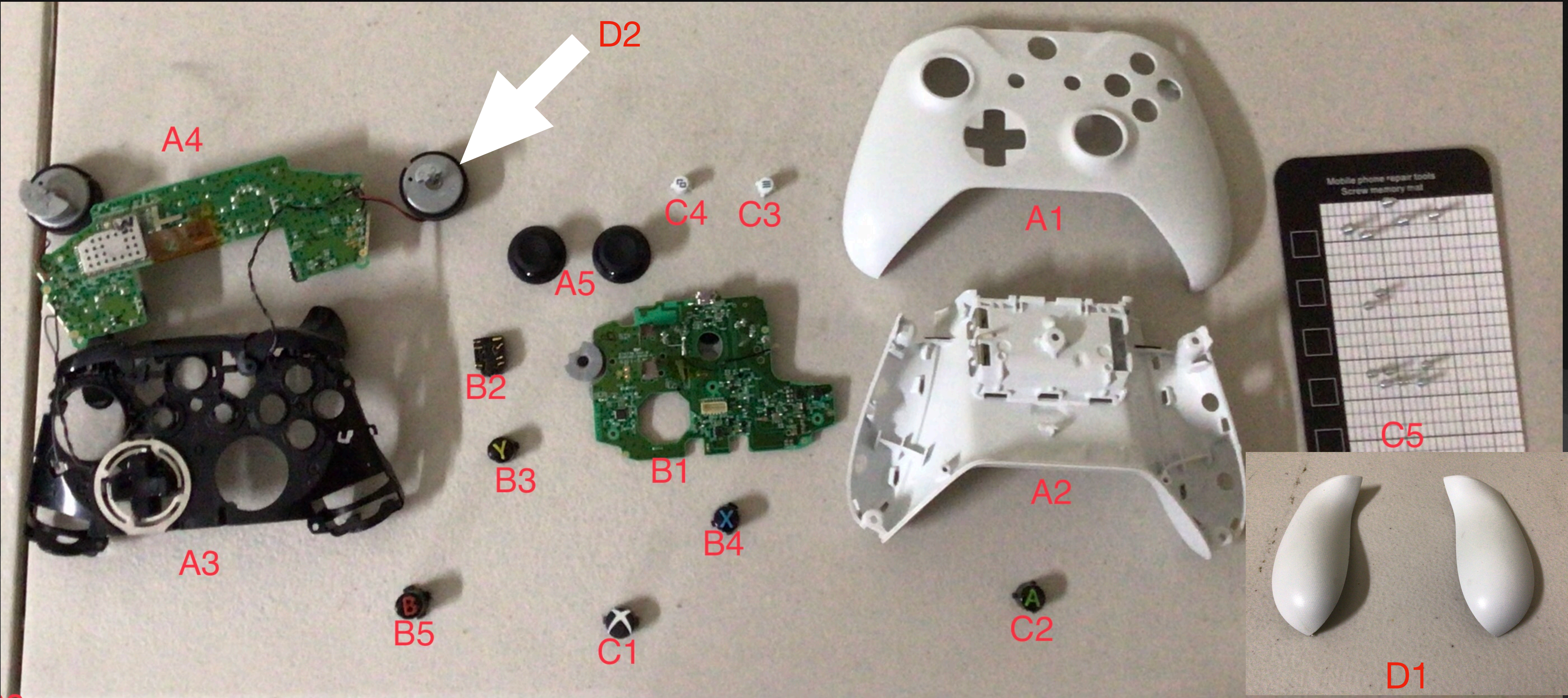
- Pg.1- Title
- Pg.2 - Table of Contents
- Pg.3 - Sites which were used
- Pg.4 - Item name
- Pg.5 - Parts graph
- Pg.6 - Declaring problem
- Pg.7 - Problem and Solution
- Pg.8 - Extra info
- Pg.9 - What does MCU mean.
- Pg.10 - Summary

Sites which were used

- acidmods.com
- resources.pcb.cadence.com
- <https://.youtu.be/Ry2s1i5bkYk>

Our team decided to disassemble

A broken Xbox series one, model 1708 controller



- A1- front panel
- A2- back panel
- A3- plastic internal frame
- A4- 1708 *MCU board bottom
- A5- joysticks
- B1- 1708 button power board, bottom
- B2- **audio jack
- B3- Y button
- B4- X button
- B5- B button
- C1 - power button
- C2- A. button
- C3 - menu button
- C4-quick settings
- C5-13 screws
- D1- controller grips
- D2- motors

* Micro controller unit
 **the place where your headphones / headset are connected

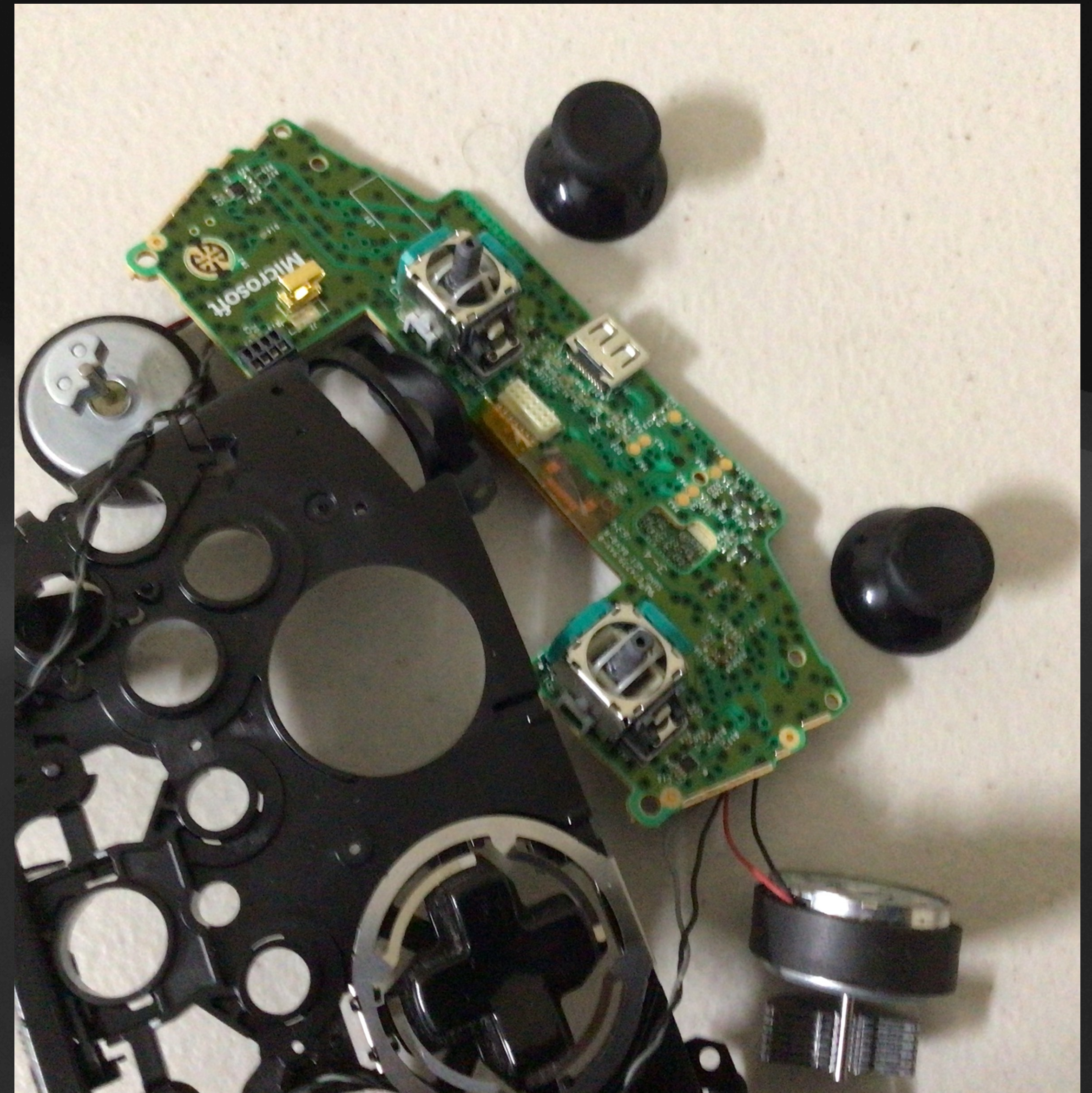
The joystick is broken



And we have to fix it

Problem & Solution

- The Problem was that the joystick was turning 360° from the bottom not from the top and it would wiggle. The Solution was to open it up and push it in when you see the internal plastic frame. Then we pushed it in and the controller was fixed.





the picture is on the standard buttons on the Xbox series one controller . The arrow pointing is an audio jack.



This picture shows the the parts of the plastic internal frame took apart

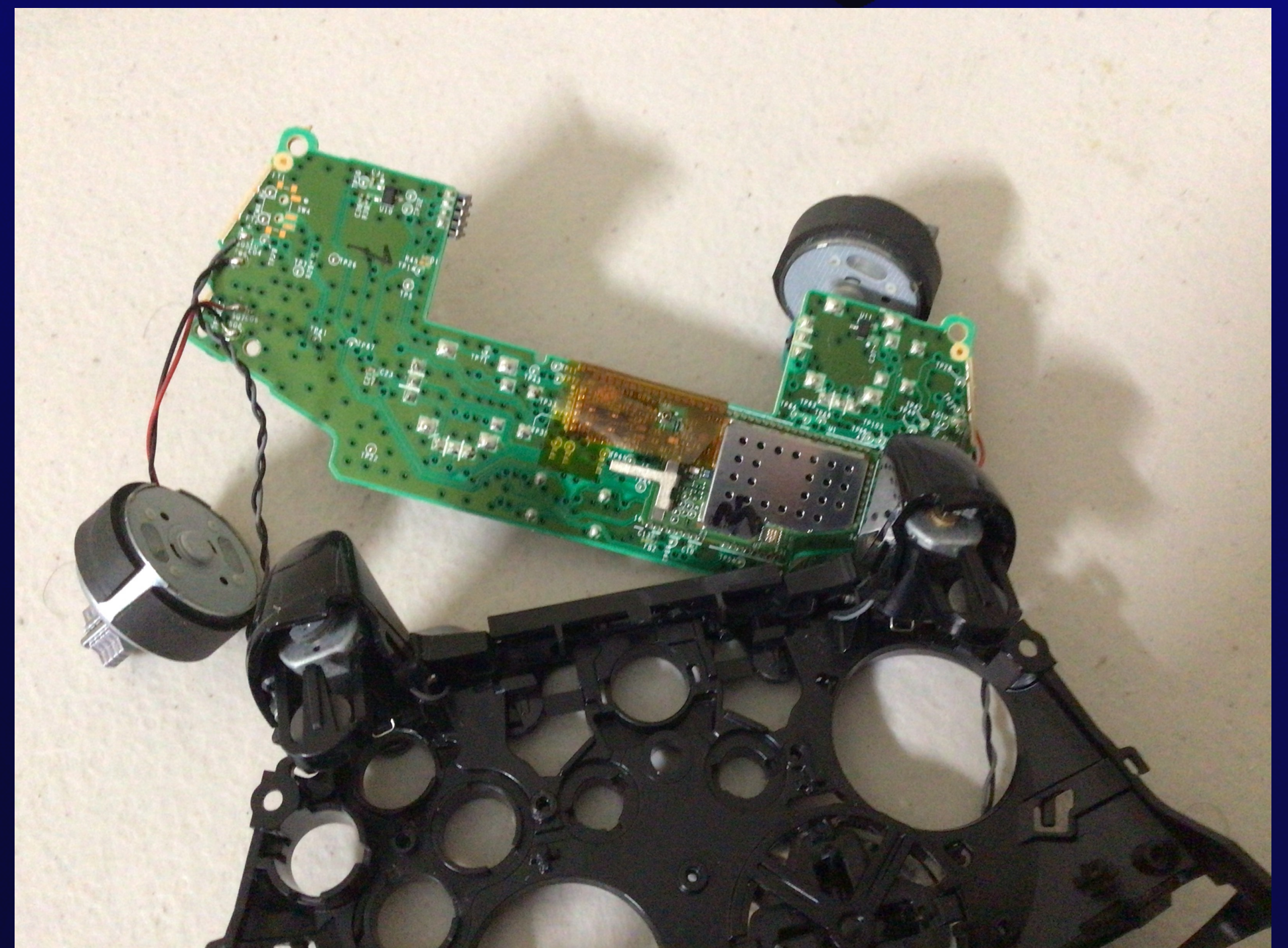
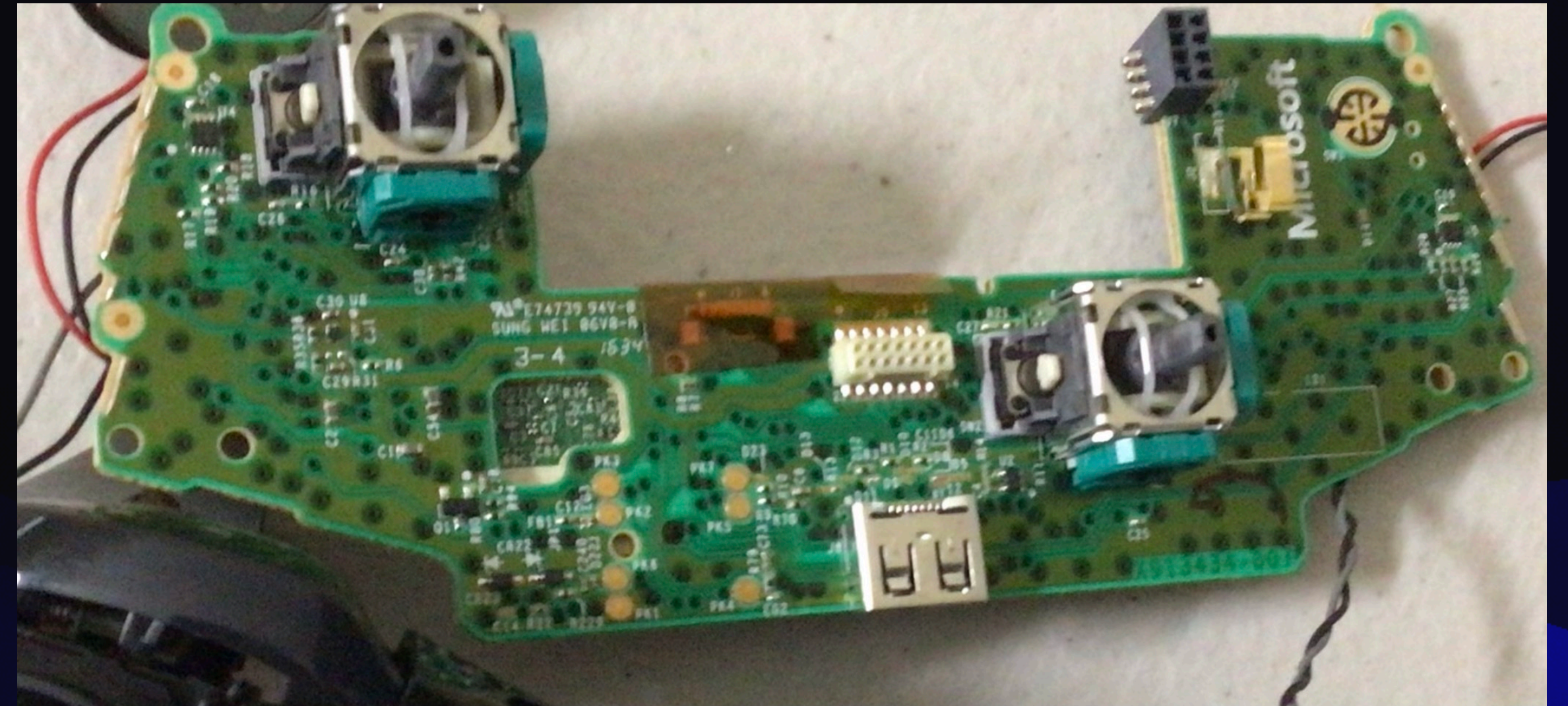
This picture shows the back of the plastic internal frame.



This is the front piece and the back piece the back piece holds the batteries the front holds the buttons which are in the picture above this one.

What does MCU mean?

- An MCU is an intelligent semiconductor IC that consists of a processor unit, memory modules, communication interfaces and peripherals. The MCU is used across a broad range of applications, including washing machines, robots, drones, radio and video game controller's



Summary

Introduction

Controllers have been substantially used for Xbox, PlayStation, Nintendo, drones, remote control cars, and Vex IQ and countless more. This all proves that controllers are commonly used entity in technology.

Experience

During this experience me and my team had fun opening up the controller we found many different parts of which we were curious, one of the parts was the MCU board which was very fascinating. We found out what MCU means. Are team also felt taking a controller apart was very appealing and enjoyable.

Conclusion

We learned about what is an MCU is and where it is, we also discovered where the motherboard was, we learned about what each pieces purpose is. Finding the solution to the problem was a simple fix compared to what other countless problems could have happened. Overall I must say this was a very enjoying project for me and my team we had troubles along the way as not having correct pieces, not finding info on Google, and having troubles put the controller back apart , but we all learned something new.